



SOUTHVILLE INTERNATIONAL SCHOOL AND COLLEGES

VIRTUAL ONLINE LEARNING & TEACHING (SISC VOLT)

**Plans for Student Safety, Continuous Learning,
and Rigorous Academic Standards**

A Proud Member of the
Southville Education Global Network (SGEN)



SOUTHVILLE GLOBAL EDUCATION NETWORK

SISC ensures that their students of all ages are globally equipped through excellent education by being WASC-U.S.A. accredited, ISO Accredited, IBO World School, IIP Gold Awardee and PQA Recipient.



Being a Microsoft IT Academy certified partner with internationally-based curriculum, and embracing the growth and grit mindset, Southville is undoubtedly one of the best international schools in the Philippines.

Southville International School affiliated with Foreign Universities

SISFU had established partnership and affiliations with colleges, universities, and academic programs from foreign countries known for their exacting standards and academic excellence. Upon completion of their courses, students are awarded diplomas or degrees from these foreign partners.



South Mansfield College

SMC takes pride of its competent academic staff in their field of expertise to ensure efficient instruction within a nurturing and caring academic environment and vibrant student life aimed at developing the holistic personality of the learners.



Stonyhurst Southville International School Malarayat Campus

Stonyhurst Southville International School - Malarayat Campus (SSISM) is the Home of the Kings! Located at the heart of Lipa City, SSISM boasts of an iconic building with a fantastic view of the grandeur of Malarayat mountains. Visit their campus and discover how to wear an invisible crown.



South SEED LPDH

SSLC's curriculum provides graduates with good opportunities to work in hospitals or clinics locally and internationally. SSLC is the top performing school south of Manila for the Medical Technology, Radiologic Technology and Pharmacy Licensure Exams



Stonyhurst Southville International School Batangas Campus

Stonyhurst Southville International School - Batangas Campus (SSISB) uses common Core and UK Curriculum in a safe and caring environment, holding the students to international standards which prepares them for opportunities both locally and globally.



Asian SEED Academy of Technology

Asian SEED Academy of Technology germinated into life from the drive of SISC to extend quality education to the financially challenged but deserving students who are eager to better their lot. Its diploma is the best asset for employment after one or two academic years.





TABLE OF CONTENTS

- I. Introduction
- II. SGEN Modes of Learning
- III. Home-School Collaboration
- IV. Communication System
- V. Frequently Asked Questions (FAQs)
- VI. SGEN 5Cs Curriculum
- VII. IB Diploma Programme
- VIII. Platforms for Virtual Online Classes
- IX. Device Functions and Specifications
- X. Virtual Online Activities for K12
- XI. Learning Materials and Resources
- XII. Assessments
- XIII. Requirements to Pass the Subjects
- XIV. Online Conduct Code

ATTACHMENTS

- A. Contact Time for Academic Subjects
- B. Sample Schedules of Virtual Online Classes



I. Introduction

Southville International School and Colleges (SISC) remains committed to excellence in the delivery of online classes and is one of the most prepared institutions in the Philippines for digital learning, as our digital infrastructure has been in place way back in 2010 and continually improved every year. The **Southville Virtual Online Learning and Teaching (V.O.L.T.)** has been using the online Learning Management System (LMS) MOODLE and Khan Academy for years now.

Students for the coming year will be able to use the following tools:

- Google Productivity Suite with the applications (Docs, Gmail, Meet, Hangout, Google Classroom, Sheet, Jamboard)
- Virtual Classrooms with Live Online Collaborative Activities (Google Meet with Google Jamboard breakouts)



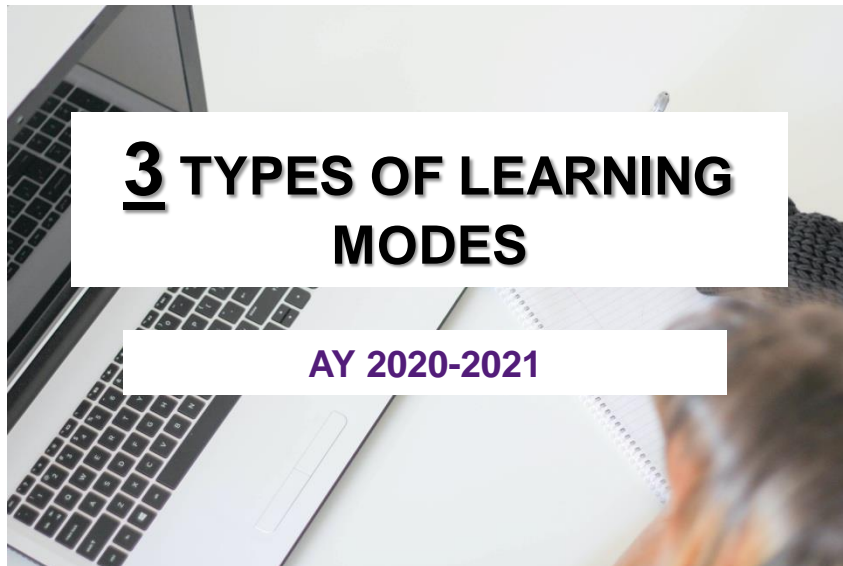
- Learning Management System accessible (Moodle) for notes, handouts, assignments, videos which can be accessed on Mobile/Desktop/Tablet (Android and iOS compatible Apps)
- Big Data and Learner Analytics using formative assessments to track the individual progress of students
- Learning community of over 4,000 students who enable each other through peer-learning with collaborative tools such as Wikis and Forums
- Live Virtual Classes (2-5 hours daily) which will be uploaded online from our many Southville schools. Every student will be able to watch more than 1,000+ hours of recorded and live virtual classes during the school year.

Southville is fortunate to have an Artificial Intelligence (AI) international expert from Imperial College - London (one of the top 10 universities in the world) as Chief Technology Officer to oversee its digital and virtual academic instructional strategies.

Currently, SISC teachers and staff are gearing up to deliver not the familiar online lessons but outstanding Virtual Online Learning and Teaching (V.O.L.T.) lessons of international standards. Intensive training sessions are currently being held to acquire the 45 competencies for SEAL through DAVIS (Student Engagement and Learning through Digital and Virtual Instructional Strategies) referenced from the International Standards for Online Quality Teaching. Southville VOLT goes beyond simple sharing of information; Southville VOLT creates spontaneous learning experiences in virtual presence of classmates and teacher, thus providing opportunities for socio-emotional support and connection. Through Southville VOLT, SISC remains steadfast to its commitment to deliver excellent academic and values education to its students in the comfort of their homes or other safe environment.

II. SGEN Modes of Learning

SGEN will allow parents to choose from 3 types of learning modes during the school year and to switch seamlessly based on personal preference.



**100%
VIRTUAL**

**Southville Virtual Online Learning and
Teaching / Homeschooling Plus**
(Southville V.O.L.T.)

**50%
Virtual,
50% Face
to face**

**Blended Learning /
Mixed Mode Learning**
(as permitted by the government/safety)

**100%
Face to
face**

Face to Face Classroom Learning
(as permitted by the government/safety)

II. SGEN Modes of Learning



1 Southville Virtual Online Learning and Teaching (V.O.L.T.) / Home-Schooling Plus (Recommended)

This refers to the Southville modality wherein **digital live teaching and learning** happen between and among teachers and students. It means that **teachers will meet the students online** and a virtual meeting will happen between the teacher and the students using video, audio, and text regardless of their location. As long as there is Internet connection, the teacher and the students will be able to share information and data in real-time without affecting learning. SGEN uses the Google Suite for Education which provides Collaboration tools (Gmail, Meet, Hangouts), Document writing tools (Sheets, Docs), Productivity resources (Drive, Calendar) and much more. Specifically, the following will be done in a 100 % online class:

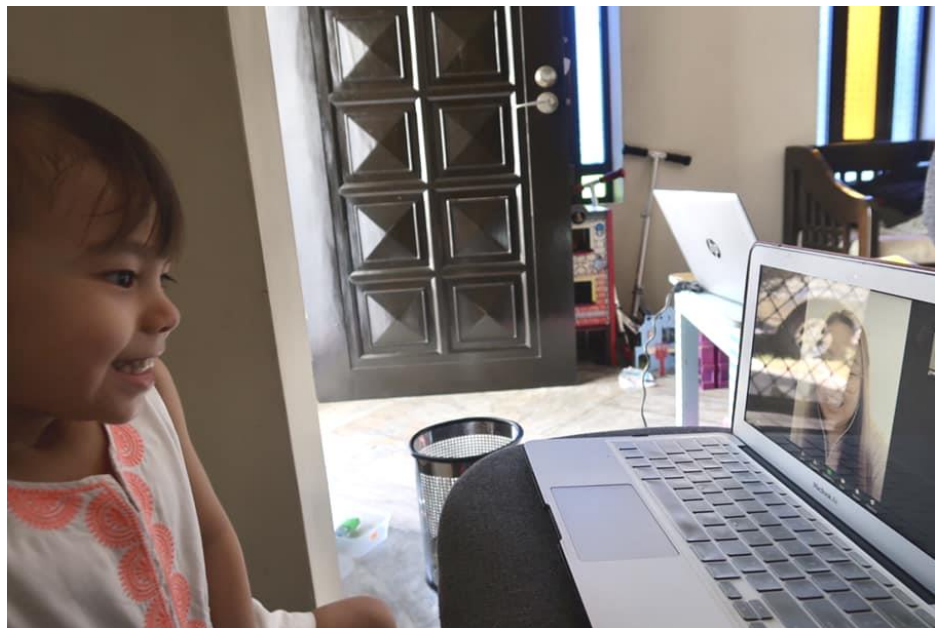
- Students attend and participate in the virtual interactive classes via Google Meet (*Synchronous Learning*).
- Recorded live streams are uploaded online for access anytime (*Asynchronous Learning*).
- Students can access the Learning Management System (24/7) through their devices (*please see page 20 for the recommended devices*).
- Teachers are available during class-hours, and regular consultation time for discussion.

II. SGEN Modes of Learning

The **Southville V.O.L.T./ONLINE Homeschooling PLUS** is not a typical homeschool provider that just provides worksheets for parents and students to answer. While HOMESCHOOLING is considered to be PARENT-LED, Southville's Homeschooling Plus is **TEACHER-LED, ACTIVITY-BASED and AGE/DEVELOPMENTALLY ANCHORED**.

Teachers lead the virtual classrooms and guide each student in accomplishing tasks to ensure that he/she will meet the international standards for young learners. Specifically, Homeschooling Plus in SGEN have the following characteristics:

- Teacher-led
- Activity-based
- Active engagement of students
- Actual classroom interaction
- Regular consultation and feedback
- Use of online modality



II. SGEN Modes of Learning

2

Blended Learning / Mixed Mode **(as permitted by the Government)**

This modality combines **learning at home** and **learning on school campus**. Those at home may join livestreams via Google Meet or view recorded livestreams online. The students can access the Learning Management System (24/7) through their devices and will be given the option to join classes physically (AM/PM or M-W, T-TH or a combination). Specifically, the following will be done in an SGEN Blended Class:

- Students can opt to not join physical classes and stay at home instead of going to school.
- Students join livestreams via Google Meet (Synchronous Learning).
- Livestreams are uploaded online for access anytime (Asynchronous Learning).
- Students can access the Learning Management System (24/7) through their devices
- Teachers are available during class-hours, and regular consultation time for discussion

3

Face-to-Face Classroom Learning **(as permitted by the Government)**

Face-to-face classroom learning takes place when the government permits. This allows students to learn more comfortably and easily in a more structured educational environment with classmates and teachers giving more first-hand information and facilitating deeper understanding of concepts through live interaction with others.

III. Home-School Collaboration

Children learn best when the significant adults in their lives -- parents, teachers, and other family and community members -- work together to encourage and support them. Schools alone cannot address all of a child's developmental needs. The meaningful involvement of parents and support from the community are essential.

Southville International School and Colleges (SISC) believes that when school and home collaborate closely with each other, the learners benefit the most.

These days, it can take extraordinary efforts to build strong relationships between families and educators. SISC reaches out to families, welcoming them as full partners in the educational process. Families, in turn, have to allot time and energy to support their children during their virtual online learning.

These are some guidelines to parents during virtual online learning:

Establish Routines	Prepare the environment	Stay in Communication with the School
<p>Remind your child to:</p> <ul style="list-style-type: none"> ➤ Wake up at the normal time ➤ Eat breakfast ➤ Undertake physical activity to remain active and maintain a positive mood. ➤ Try to alternate screen time with off-screen activities to maintain strong mental and physical well-being ➤ Keep in touch with their family and friends as online learning can feel isolating. 	<ul style="list-style-type: none"> ➤ Provide a suitable space which is quiet, well lit, cool and free from distractions ➤ Provide a table or desk ➤ Provide an upright chair ➤ Provide a stable internet connection ➤ Provide digital devices ➤ Have the learning materials available 	<ul style="list-style-type: none"> ➤ Check correspondences from the teacher ➤ Read the weekly Students and Parents Bulletin ➤ Read the child's Academic Weekly Planner or AWP ➤ Attend virtual Parent-Teacher Conferences or PTC ➤ Attend school sponsored webinars and virtual conferences

IV. Communication System

During the time of online classes, communication will be through email and social media platforms. For any inquiry or concern, you may email us at pr@southville.edu.ph or send a message through our Official Facebook Page – Southville International School and Colleges.

You may also direct your concerns to the following offices:

Area of Concern	Office/Person	e-mail address of person
Admission	PR Office	elyds@southville.edu.ph 09178532450
Fees (tuition fees, miscellaneous fees, virtual wallet and other payables)	Accounting Office	chona@southville.edu.ph queene_balaoro@southville.edu.ph elona_pedrozo@southville.edu.ph
Transcript of Records, Enrolment, Certification	Registrar's Office	joy_martinez@southville.edu.ph 09274255426
Internet, Technology, Gadget and LMS	MIS Head Deputy Principal for Special Programs & INNOVE	marky@southville.edu.ph junessal@southville.edu.ph
School Principal	Principal	avics@southville.edu.ph
STAR/Elizalde Campus	Deputy Principal	smanalo@southville.edu.ph
ECED Munich Campus	Deputy Principal	phianht@southville.edu.ph
G3-G5 Munich	Deputy Principal	jfonte@southville.edu.ph
G6-G9	Deputy Principal	gladysm@southville.edu.ph
G10-12	Deputy Principal	jang@southville.edu.ph
International Baccalaureate	IB Coordinator IB Asst. Coordinator	john_wraith@southville.edu.ph armiec@southville.edu.ph

V. Frequently Asked Questions (FAQs)

- 1. Because of the uncertainties, can there be friendlier payment options?** The school offers flexible payment schemes to choose from.

Plan A - Full Payment

Hundred percent payment upon enrolment.

Plan B - Three Payments

It is an installment plan that allows parents to pay at least **25%** of the fees upon enrollment and the remaining balance to be paid in October and January.

Plan C - Five Payments

It is payable in five installments with initial payment of **22%** of the fees upon enrollment and the remaining balance to be paid in October, December, February and April.

Plan D – Ten Payments

It is a monthly payment scheme with **20%** of the fees to be paid upon enrollment and the remaining **80%** is spread out for the next nine months.

- 2. What if there is no one in the family who can assist our young children during their classes or with school work?** All our teaching modalities are teacher-led. There will be teachers who will handle teaching in any of the modality. However, very young learners would need guidance and minimal assistance from an adult during the Virtual Online Learning and Teaching.

- 3. Will physical books and other supplies still be required in Virtual Online Learning?**

Yes. There will be textbooks and other learning materials. The books can be claimed from the school. Textbooks will be used during the school year and will remain important resources for learning. Materials and worksheets will be provided ahead of time. Students will be given enough time to complete the assigned activities. There will also be supplemental resources available like audio, videos, YouTube links, book references and other online materials.



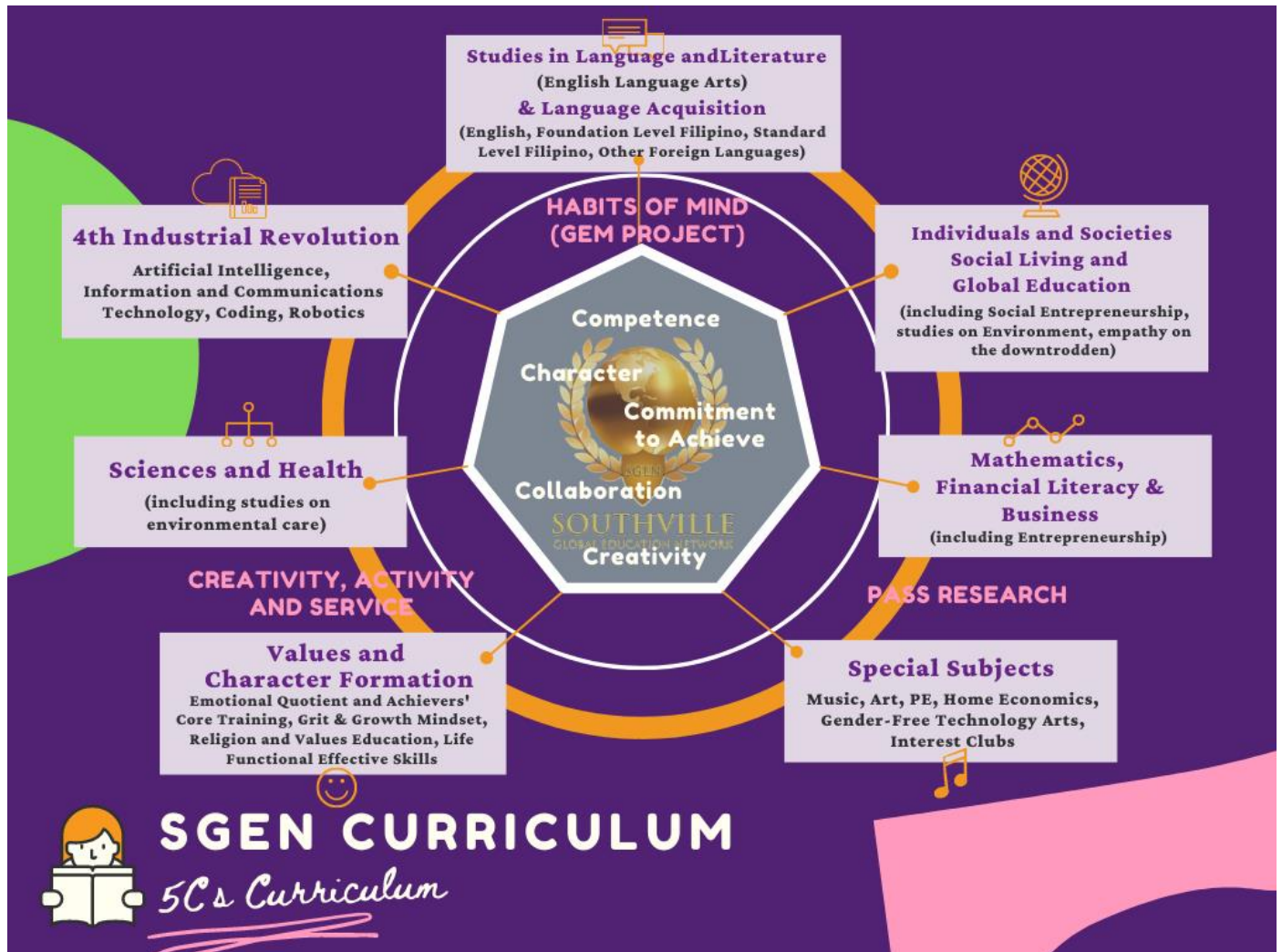
V. Frequently Asked Questions (FAQs)

- 4. What support can parents expect from the school to help the children?** Each class will have a classroom adviser. There is a guidance counselor who will give routine counselling to all students. Students needing special and intensive counseling will be met by the counselor more often. There is a Sponsorship Program where a teacher-sponsor helps student with emotional issues that can affect the child's schooling.
- 5. If we are not comfortable with the arrangements and decide to stop schooling, what are the implications?** Dropping from school would mean that the child will not be given certification that he/she finished the school year. Hence, the child may need to repeat the grade level the following school year.
- 6. What is Homeroom Period or Circle Time?** Homeroom Period or Circle Time provides a classroom environment for students to establish a sense of belonging, build classroom rapport, recognize the need for structure and develop a sense of organization. It is an important forum for virtual live discussion of assignments and clarification of announcements and requirements. This is also the time when teachers and students discuss the Value of the Week. It aims to enhance the students' social-emotional learning and build a sense of community and camaraderie in the class at the same time.
- 7. Will attendance be checked in the virtual online classes?** Yes. Attendance will be checked everyday during the virtual homeroom with the adviser and the whole class. Attendance is also checked through responses to emails, discussion board postings, assignment submissions or as long as students respond to course requirements by the day and time established by the teacher.

V. Frequently Asked Questions (FAQs)

- 8. What are the implications if students fail to attend the online classes?** Their academic routine will be disrupted and they will miss the opportunity to be equipped with the knowledge and skills required in the curriculum.
- 9. Do students need to be in uniform when they attend virtual online classes?** They should wear their school uniform during assemblies. On other days, they can wear civilian clothes following SISC's dress code.
- 10. Will students still have access to the library when they study online?** There are resources available online that they can utilize to help them with their references. Please check the online links on the SISC website.
- 11. Will there be an available staff/teacher/officer who I could chat with if I have concerns?** You can send an email to the Basic Education officers as well as to the K-12 teachers to answer your queries. You can also send your inquiries to the Public Relations (PR) Office through email, Viber or Messenger.
- 12. If I have more questions, who will I contact?** You may address your queries to your Deputy Principal. You may email them at pr@southville.edu.ph. A personnel in-charge will also direct you to the right department for your concerns and immediately coordinate with it before getting back to you.
- 13. Who can students go to if they are feeling anxious?** Virtual online mentoring is happening even during quarantine. Please get in touch directly with the sponsor, homeroom adviser or counselor. If you need help in contacting him/her, your Principal or the PR Staff will help connect the two of you. Students also have sponsors who they can approach anytime through online platforms.

VI. SGEN 5Cs Curriculum



SISC will offer the same subjects for Academic Year 2020-2021 following the 7 Curriculum Groups namely: Studies in Language and Literature/Language Acquisition, Individuals and Societies (Social Living and Global Education), Sciences and Health, Mathematics, Special Subjects, 4th Industrial Revolution and Values and Life Education. Integral in the curriculum are the Portfolio Assessment for Southville Students (P.A.S.S.) Research for Grades 6 and 12, Creativity, Activity and Service or CAS and Habits of Mind. In the case of IB, the essential courses are Theory of Knowledge, Extended Essay, and Creativity, Activity and Service. There are also sessions for Religion Classes such as Catholic Education/Christian Living that students can take if they choose to.

VII. IB Diploma Programme

The SISC International Baccalaureate follows **the IB Diploma Programme Curriculum** (www.ibo.org)

Language Acquisition

English B HL/SL
French ab initio SL
Mandarin ab initio SL
Spanish ab initio SL

Individuals and Societies

Business Management HL/SL
History HL/SL
Psychology HL/SL

The Sciences

Biology HL/SL
Chemistry HL/SL
Physics HL/SL

The Arts

Theatre HL/SL
Visual Arts HL/SL

Studies in Language and Literature

English A Language and Literature HL/SL
Korean A Literature HL/SL



Mathematics

Mathematics Applications and Interpretation HL/SL
Mathematics Approaches and Analysis HL/SL

Core Subjects

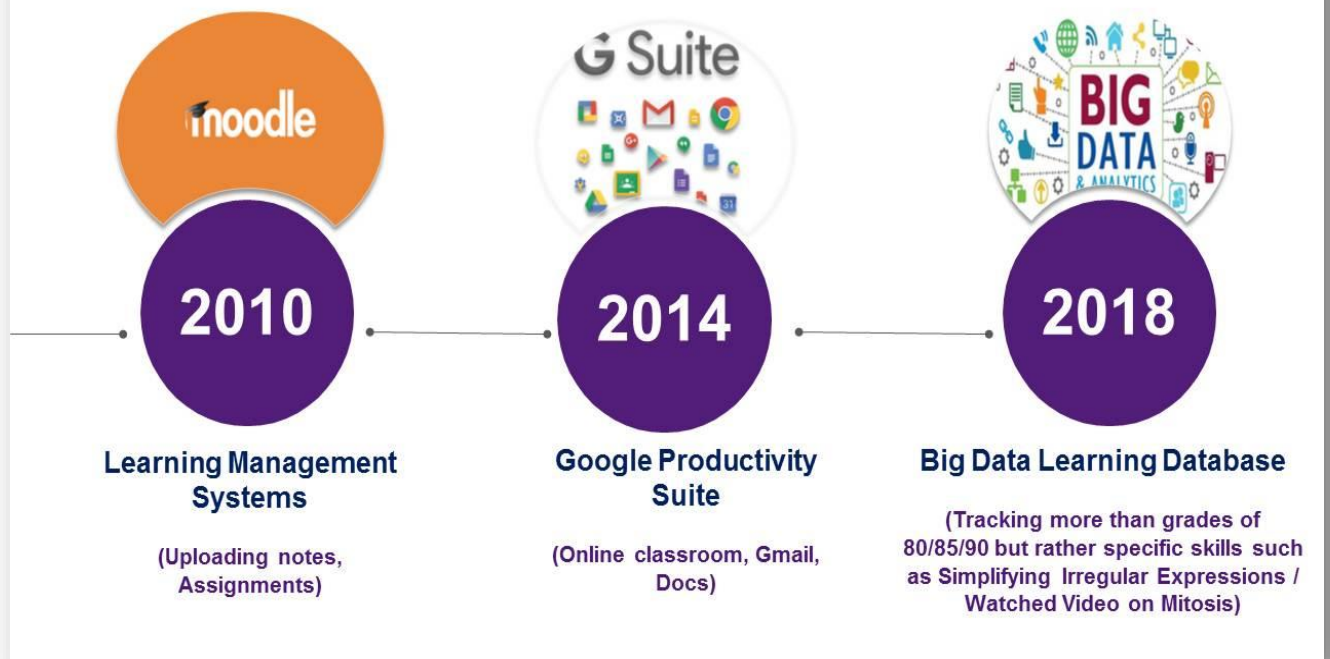
Creativity, Activity, Service (CAS)
Extended Essay (EE)
Theory of Knowledge (ToK)

VIII. Platforms for Virtual Online Classes

Learning Management System (LMS)

SGEN has been using Moodle as its LMS since 2010. It is complemented by collaborative apps such as the Google Productivity Suite (Docs, Gmail, Meet, Hangout, Google Classroom) and more sophisticated areas of online learning such as Flipped Classroom, Big Data Analytics, and Real-time Data. E-mail notifications of student progress are sent to parents. The teachers and students use the LMS for accessing notes, assignments, and quizzes on their mobile devices and desktops and for joining discussion forums.

How Southville prepared for digital learning (10 year story)





The following are the online platforms that will be used and navigated by the students.

Applications	PS	GS	JHS-SHS	IB
Email		✓	✓	✓
Moodle	✓	✓	✓	✓
Google Classroom	✓	✓	✓	✓
Google Meet	✓	✓	✓	✓
Google Hangouts		✓	✓	✓
Zoom	✓	✓	✓	✓
FB messenger		✓	✓	✓
Viber		✓	✓	✓
Exam.net		✓	✓	✓
Managebac				✓

Note: Email will be sent to the accounts of the students via the LMS of the school.

PS – Preschool
 GS – Grade school
 JHS – Junior High School
 SHS – Senior High School
 IB – International Baccalaureate



Learning through the use of FLIPPED CLASSROOMS

Edutopia enumerated the advantages of Flipped Classrooms:

1. It allows for self-paced learning. Students can prepare for class before the formal face to face discussion of the lesson and gives them ample time to build their prior knowledge about the lesson.
2. It allows students to probe deeper into the subject. It will better prepare them for a more engaging discussion and rich input about the topic they are learning.
3. Corresponding results and statistics are immediately recorded while students complete their courses, assignments, and exams. Instructors can use these statistics to better track the progress of students and find patterns in their results. It makes it easier to have a clear idea of what topics student's, individually and as a group, struggle with the most.
4. It allows teacher to reuse the videos and other resources uploaded in the LMS.

Synchronous Activity

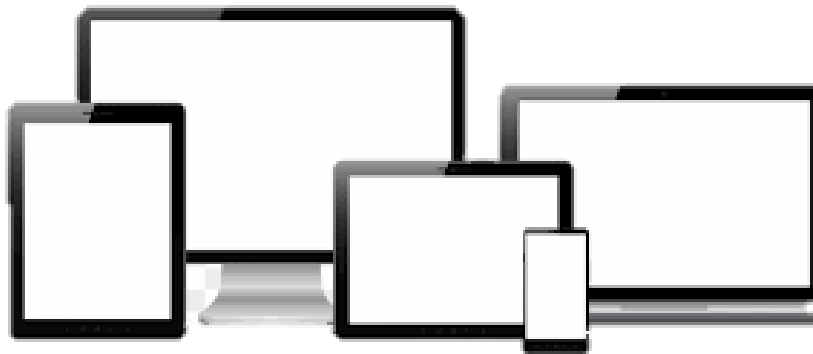
SGEN students will be able to join virtual classes via Google Meet or have learning activities with teachers and their classmates in real-time through Zoom. Virtual classes will happen for all subjects. SGEN has added livestreaming as part of delivering instruction to provide real-time, on demand content to the students. Through livestreaming, the students will be able to access learning directly with their classmates. The experience will not only benefit them academically but also socially and emotionally as they see themselves to be part of a bigger classroom.

Asynchronous Activity

SGEN students can watch uploaded livestreams of class instruction and access it anytime at their convenience. On scheduled days, classes will be done asynchronously using email, MOODLE, and SGEN Academic Technology Strategies (SATS).

IX. Device Functions and Specifications

Recommended Device Functions	1. Can connect to the Internet
	2. Can be installed with web browsers such as Chrome or Safari
	3. Can take video calls with audio and video
	4. Can create, edit and save documents and presentations
	5. Can create, take, edit and save images, audio files and videos
	6. Can support Google Suite applications (Gmail, Drive, Maps, Docs, Sheets, Slides, Jamboard, etc.)



Recommended Device Specifications	Tablet <ul style="list-style-type: none"> •Any brand •Android OS version 8 or higher •Processor speed of 1.2 - 2.2 GHZ or higher •3000 mAh battery life (at least)
	Laptop <ul style="list-style-type: none"> •Any brand •7th to 9th Generation Intel I3 or I5, 2.66 GHZ and up processor •256 to 500 SSD (solid state drive) •4 gb memory (at least)
	Desktop <ul style="list-style-type: none"> •Any brand •7th to 9th Generation Intel I3 or I5, 2.66 GHZ and up processor •256 to 500 SSD (solid state drive) •4 gb memory (at least)

X. Virtual Online Activities for K12

SISC's virtual online activities include meaningful and authentic learning experiences such as collaborative learning groups, student-led review sessions, games, analysis or reactions to videos, discussions, concept mapping, analyzing case studies, and more. These activities are designed to make students engaged in their learning and become active learners.

Approaches To Learning (ATL)

21 st Century Skills	Sample Engaging online activities
Creativity and Innovation	Gamification, avatar making, Digital Library, 3D Models
Critical Thinking and Problem-Solving Skills	Research; investigatory projects; Ideation, Business Plan
Communication and Collaboration	Blogging, Vlogging; Southville Academic Technology Strategies through Lexile Reading program
Global Awareness	Dialogues
Self-Direction	Flipped classroom, creating e-portfolios; Southville Academic Technology Strategies through Khan Academy
Flexibility and adaptability	MOOCs, Webinars
Effective interaction with others	Online Discussion Forum

XI. Learning Materials and Resources

- Worksheets for preschool will be sent ahead of time and children will be given enough time to complete the activities.
- Supplemental resources for preschool like videos, links to YouTube, and book references will also be sent weekly.
- The school will inform the parents once physical books and other materials are available.

XII. Assessments

It remains crucial that teachers find ways to obtain evidence of learning. Students will be assessed and evaluated using formative and summative assessments. The output of students should reflect the skills learned in all subjects. Therefore, projects will be integrated. Non-core subjects will not require projects. Instead, they will collaborate with a core subject teacher's authentic assessment for students. The teachers will give more formative assessments and are required to give feedback on the progress of the student (ex. Writing drafts following the process of writing is a good form of formative assessment). Regular feedback to students and parents is structured in the schedule. SISC is guided by the Principles of Assessment: *Assessment For Learning, Assessment As Learning, Assessment Of Learning*.

Blooms Taxonomy	SISC Online Exams
Creating	Authentic assessments such as creating informational web pages (blogs, vlogs), PASS Research
Evaluate	Presentations
Analyze	Virtual labs, case studies
Apply	Animations, tutorial
Understand	Moodle discussions, document-based questions, simulations, comprehension tutorials
Remember	Formative assessments such as quizzes given through Quizizz, Kahoot, Socrative, Exam.net

Other exams given to students of SISC are Term Exams, TOEFL Jr. TOEFL ITP, SBA and SAT. TOEIC and TOEFL are international exams for the English Language.

XIII. Requirements to Pass the Subjects

The following are conditions for the students to pass the subject and the grade level:

- a. Has an average of A (at least 80%) in the final grade in each subject
- b. Has finished all academic requirements including PASS Research (for Grs. 6 and 12 students)

The following are the requirements to pass the subjects in IB Program:

- a. A grade of 3 in the standard level subjects
- b. A grade of 4 in the higher level subjects
- c. Core subjects: on-target/complete CAS status, no grade lower than D in Theory of Knowledge and Extended Essay.
- d. Completed all internal and external assessments

XIV. Online Conduct Code



Recommended Dress Code

SISC is proud of its tradition of having well-groomed and appropriately dressed students. During Virtual Classes, students are expected to be respectful of the virtual classroom environment. Students may wear their uniforms to set the tone for learning, or wear civilian clothes following SISC's dress code.

Civilian Dress Code (from SISC Student Handbook)

On occasions when the students are allowed to wear civilian clothes, they should demonstrate respect for themselves and for the school through their manner of dressing and appearance. Fancy/Mod attire such as very short shorts, singlet, mini skirt/micro-mini skirts, tattered pants, tank tops, bare mid-riffs, halter tops, tube tops, and see-through clothes are inappropriate for school wear. Statement shirts with obscene/suggestive words/slogans/pictures printed on worn outfits are strictly not allowed. Headwear and accessories that pose a distracting appearance are strongly discouraged.



In addition to what are written in SISC student handbook, the following must be observed by all students:

Respectful Communication

1. Follow all SISC policies on the use of technology resources.
2. Be respectful of your classmates and teachers. Allow others to speak, invite others to share, and respect other people's ideas.
3. Keep your image "live" during class sessions. It is important to make eye contact into your camera to demonstrate your commitment to learning to your classmates and teacher.
4. Microphones are almost always on. Remember that your classmates and teacher can hear noises in your environment such as whispering, chewing, sneezing, and tapping your pen or pencil, etc. so please keep distractions to a minimum or mute your microphone.

General Online Etiquette

1. Avoid side conversations and multitasking.
2. Take your meals and snacks during break time; eating during class is generally frowned upon, and being in a virtual classroom is no different.
3. When in doubt, just think you are in your regular academic classroom and put your best virtual foot forward!



ATTACHMENTS

ATTACHMENT A:

Contact Time for Academic Subjects

SUBJECTS	CONTACT TIME
PRESCHOOL <ul style="list-style-type: none"> English Language Arts and Reading, Math, Thematic Study, Values, AI, PE, and integration of Executive Function and Mindfulness 	3-4 hours a day (5 times a week) with screen breaks in between
GRADE SCHOOL <ul style="list-style-type: none"> Core Subjects (Math, Science, English) Non- Core (SLGE, Filipino/Special Filipino, AI/ICT, Fin Lit, Foreign Languages, EQ/ACT and RVED) Special Subjects (Music, Art, HE, Tech Arts) 	Daily Schedule/weekly/term 1 hr each/6x a week 1 hr each/1x to 3x a week 1 hr/per term or whole year (PE)
JUNIOR HIGH SCHOOL <ul style="list-style-type: none"> Core Subjects (Math, Science, English) Non- Core (SLGE, Filipino, Robotics, Fin Lit, Foreign Languages) Special Subjects (Music, Art, HE, Tech Arts) 	Daily Schedule/weekly/term 1 hr each/6x a week 1 hr each/1x to 3x a week 1 hr/per term or whole year (PE)
SENIOR HIGH SCHOOL <ul style="list-style-type: none"> STEM – Core Subjects (Science, Math) ABM – Core Subjects (Business Management, Accounting) HUMSS – Core Subjects (Social Science, Individuals and Societies) GAS – Core Subjects (English, Math and Science) 	Weekly/trimester 6 hrs each/week 6 hrs each/week 6 hrs each/week 5 hrs each/week
INTERNATIONAL BACCALAUREATE <ul style="list-style-type: none"> Group Subjects Core Subjects Theory of Knowledge Creativity, Activity, Service (CAS) and Extended Essay (EE) 	Daily Schedule/weekly/term 4 hrs each/week 2 hrs /once a week 1 hr each/once a week 2 hrs /once a week

ATTACHMENT B: Sample Schedules of Virtual Online Classes

PRESCHOOL CLASS SCHEDULE - AM

TIME	MON	TUE	WED	THU	FRI
8:30 am – 9:30 am	Batch A	Batch A	One on One Consultation and feedback to students and parents	Batch A	Batch A
9:30 am – 10:30 am	Screen Break / Skill Building Offline	Screen Break / Skill Building Offline		Screen Break / Skill Building Offline	Screen Break / Skill Building Offline
10:30 am – 11:30 am	Batch A	Batch A		Batch A	Batch A
11:30 am – 12:00 nn	Wrap Up Session	Wrap Up Session		Wrap Up Session	Wrap Up Session
12:00 nn – 1:00 pm	Lunch Break and Sanitation	Lunch Break and Sanitation		Lunch Break and Sanitation	Lunch Break and Sanitation

PRESCHOOL CLASS SCHEDULE - PM

TIME	MON	TUE	WED	THU	FRI
1:00 pm – 2:00 pm	Batch B	Batch B	One on One Consultation and feedback to students and parents	Batch B	Batch B
2:00 pm – 3:00 pm	Screen Break / Skill Building Offline	Screen Break / Skill Building Offline		Screen Break / Skill Building Offline	Screen Break / Skill Building Offline
3:00 pm – 4:00 pm	Batch B	Batch B		Batch B	Batch B
4:00 pm – 4:30 pm	Wrap Up Session	Wrap Up Session		Wrap Up Session	Wrap Up Session

**Schedules may be subject to change*



G1 and G2 CLASS SCHEDULE

TIME	MON	TUE	WED	THU	FRI
8:20 am – 8:40 am	Homeroom/ GMP/EQ	Homeroom/ GMP/EQ	Homeroom/ GMP/EQ	Homeroom/ GMP/EQ	Homeroom/ GMP/EQ
8:40 am – 9:40 am	English	English	English	English	English
9:40 am – 10:00 am	Recess/ Screen Break	Recess/ Screen Break	Recess/ Screen Break	Recess/ Screen Break	Recess/ Screen Break
10:00 am – 11:00 am	Math	Math	Math	Math	Math
11:00 am – 11:20 am	Screen Break	Screen Break	Screen Break	Screen Break	Screen Break
11:20 am – 12:00 nn	Science	Science	Science	Science	Khan Academy, Individual Work and Consultation (Early Dismissal)
12:00 nn – 12:40 nn	Lunch/ Screen Break	Lunch/ Screen Break	Lunch/ Screen Break	Lunch/ Screen Break	Early Dismissal
12:40 nn – 1:20 pm	Filipino/ SP Fil	Art	Filipino/ SP Fil	CL/VED	Online Consultation
1:20 pm – 1:40 pm	Homeroom	Homeroom	Homeroom	Homeroom	

**Schedules may be subject to change*

G3 CLASS SCHEDULE

TIME	MON	TUE	WED	THU	FRI
9:00 am – 9:15 am	Homeroom/ GMP	Homeroom/ GMP	Assembly*/ Homeroom	Homeroom/ GMP	Homeroom/ GMP
9:15 am – 10:15 am	English	English	SLGE	Math	Science
10:15 am – 11:15 am	SLGE	Filipino/SP Fil	Math	Art	Language Acquisition
11:15 am – 11:45 am	Lunch/ Screen Break	Lunch/ Screen Break	Lunch/ Screen Break	Lunch/ Screen Break	Lunch/ Screen Break
11:45 am – 12:45 nn	Math	Science	English	English	Math
12:45 nn – 1:45 pm	PE	AI-ICT	AI-ICT	SLGE	EQ/ACT
1:45 pm – 2:15 pm	Screen Break	Screen Break	Screen Break	Screen Break	Screen Break
2:15 pm – 3:15 pm	Science	Math	Science	Science	English
3:15 pm – 3:45 pm	EEP	EEP	Fin Lit	Fin Lit	Homeroom/ GMP

*Assembly starts at 8:30 am

*Schedules may be subject to change

G4 CLASS SCHEDULE

TIME	MON	TUE	WED	THU	FRI
9:00 am – 9:15 am	Assembly*/ Homeroom	Homeroom/ GMP	Homeroom/ GMP	Homeroom/ GMP	Homeroom/ GMP
9:15 am – 10:15 am	English	English	SLGE	Math	Science
10:15 am – 11:15 am	SLGE	Filipino/SP Fil	Math	AI-ICT	Language Acquisition
11:15 am – 12:15 nn	Lunch/ Screen Break	Lunch/ Screen Break	Lunch/ Screen Break	Lunch/ Screen Break	Lunch/ Screen Break
12:15 nn – 1:15 pm	Math	Science	English	English	Math
1:15 pm – 2:15 pm	AI-ICT	PE	EEP	SLGE	Fin Lit
2:15 pm – 3:15 pm	Science	Math	Science	Science	English
3:15 pm – 3:45 pm	EQ/ACT	EQ/ACT	Art	Art	Homeroom/ GMP

*Assembly starts at 8:30 am

*Schedules may be subject to change

**G5 CLASS SCHEDULE**

TIME	MON	TUE	WED	THU	FRI
9:00 am – 9:15 am	Homeroom/ GMP	Assembly*/ Homeroom	Homeroom/ GMP	Homeroom/ GMP	Homeroom/ GMP
9:15 am – 10:15 am	English	English	Math	Math	Science
10:15 am – 11:15 am	SLGE	AI-ICT	AI-ICT	SLGE	EEP
11:15 am – 12:15 am	Lunch/ Screen Break	Lunch/ Screen Break	Lunch/ Screen Break	Lunch/ Screen Break	Lunch/ Screen Break
12:15 am – 1:15 pm	Math	Science	English	English	Math
1:15 pm – 2:15 pm	Fil/SP Fil	SLGE	Language Acquisition	PE	Art
2:15 pm – 3:15 pm	Science	Math	Science	Science	English
3:15 pm – 3:45 pm	Fin Lit	Fin Lit	EQ/ACT	EQ/ACT	Homeroom/ GMP

*Assembly starts at 8:30 am

*Schedules may be subject to change

G6 CLASS SCHEDULE

TIME	MON	TUE	WED	THU	FRI
8:30 am – 9:00 am	Assembly	HR/Life	Homeroom	Homeroom	Homeroom
9:00 am – 10:00 am	English	English	English	English	English
10:00 am – 10:30 am	Screen Break	Screen Break	Screen Break	Screen Break	Screen Break
10:30 am – 11:30 am	Science	English	Science	Science	Science
11:30 am – 12:30 nn	AI	AI	PE	Fin Lit	EEP
12:30 nn – 1:00 pm	Lunch/ Screen Break	Lunch/ Screen Break	Lunch/ Screen Break	Lunch/ Screen Break	Lunch/ Screen Break
1:00 pm – 2:00 pm	Math	Math	Math	Math	Math
2:00 pm – 3:00 pm	SLGE	SLGE	Chinese	SLGE	RVed
3:00 pm – 4:00 pm	H.E.		PASS Research Teachers	Filipino/SP FIL	PASS Research Adviser

*Schedules may be subject to change

Asynchronous Activities

Asynchronous Bi-Weekly


**G7 CLASS SCHEDULE**

TIME	MON	TUE	WED	THU	FRI
8:30 am – 9:00 am	Assembly	HR/Life	Homeroom	Homeroom	Homeroom
9:00 am – 10:00 am	Science	English	Science	Science	Science
10:00 am – 10:30 am	Screen Break	Screen Break	Screen Break	Screen Break	Screen Break
10:30 am – 11:30 am	Foreign Language	E.Q.	English	AI	Filipino/SP Fil
11:30 am – 12:30 nn	English	Science	PE	English	English
12:30 nn – 1:00 pm	Lunch/ Screen Break	Lunch/ Screen Break	Lunch/ Screen Break	Lunch/ Screen Break	Lunch/ Screen Break
1:00 pm – 2:00 pm	Math	Math	Math	Math	Math
2:00 pm – 3:00 pm	SLGE	SLGE	AI	SLGE	Business
3:00 pm – 4:00 pm	Business	AI	HE	Filipino/SP FIL	Music
4:00 pm – 5:00 pm	English - EEP	Science			

G8 CLASS SCHEDULE

TIME	MON	TUE	WED	THU	FRI
8:30 am – 9:00 am	Assembly	HR/Life	Homeroom	Homeroom	Homeroom
9:00 am – 10:00 am	Science	English	English	English	Math
10:00 am – 10:30 am	Screen Break	Screen Break	Screen Break	Screen Break	Screen Break
10:30 am – 11:30 am	Math	Business	SLGE	Math	AI
11:30 am – 12:30 nn	Foreign Language	Science	Science	Business	E.Q.
12:30 nn – 1:00 pm	Lunch/ Screen Break	Lunch/ Screen Break	Lunch/ Screen Break	Lunch/ Screen Break	Lunch/ Screen Break
1:00 pm – 2:00 pm	Science	Filipino/SP Fil	Filipino/SP Fil	AI	EEP
2:00 pm – 3:00 pm	Music	AI	Math	Science	Math
3:00 pm – 4:00 pm	English	Math	English - EEP	PE	H.E.
4:00 pm – 5:00 pm	SLGE	SLGE			Science

*Schedule may be subject to change

 Asynchronous Activities Asynchronous Bi-Weekly

**G9 CLASS SCHEDULE**

TIME	MON	TUE	WED	THU	FRI
8:30 am – 9:00 am	Assembly	HR/Life	Homeroom	Homeroom	Homeroom
9:00 am – 10:00 am	Filipino/SP Fil	English	AI	English	Foreign Language
10:00 am – 10:30 am	Screen Break	Screen Break	Screen Break	Screen Break	Screen Break
10:30 am – 11:30 am	SLGE	SLGE	Business	AI	English
11:30 am – 12:30 nn	Math	RVEEd	Science	Math	Business
12:30 nn – 1:00 pm	Lunch/ Screen Break	Lunch/ Screen Break	Lunch/ Screen Break	Lunch/ Screen Break	Lunch/ Screen Break
1:00 pm – 2:00 pm	Science	Science	English	Science	Math
2:00 pm – 3:00 pm	Math	Math	Math	SLGE	Science
3:00 pm – 4:00 pm	English	PE	English - EEP	Art	AI
4:00 pm – 5:00 pm		Filipino/SP Fil			Science

G10 CLASS SCHEDULE

TIME	MON	TUE	WED	THU	FRI
8:30 am – 9:00 am	HR/Life	Assembly	Homeroom	Homeroom	Homeroom
9:00 am – 10:00 am	Filipino/SP Fil	English	AI	English	Foreign Language
10:00 am – 10:30 am	Screen Break	Screen Break	Screen Break	Screen Break	Screen Break
10:30 am – 11:30 am	SLGE	SLGE	Business	AI	English
11:30 am – 12:30 nn	Math	EQ ACT	Science	Math	Business
12:30 nn – 1:00 pm	Lunch/ Screen Break	Lunch/ Screen Break	Lunch/ Screen Break	Lunch/ Screen Break	Lunch/ Screen Break
1:00 pm – 2:00 pm	Science	Science	English	Science	Math
2:00 pm – 3:00 pm	Math	Math	Math	SLGE	Science
3:00 pm – 4:00 pm	English	PE	English – EEP	Tech Arts	AI
4:00 pm – 5:00 pm	Science	Filipino/SP Fil		Filipino/SP Fil	Homeroom (4:00 – 4:15)

*Schedule may be subject to change

Asynchronous Activities

Asynchronous Bi-Weekly



G11 CLASS SCHEDULE (ABM)

TIME	MON	TUE	WED	THU	FRI
8:30 am – 9:00 am	HR/Life	Assembly	Homeroom	Homeroom	Homeroom
9:00 am – 10:00 am	Accounting	Accounting	Accounting	Accounting	Accounting
10:00 am – 10:30 am	Screen Break	Screen Break	Screen Break	Screen Break	Screen Break
10:30 am – 11:30 am	Accounting	Lang Acq	Lang Acq	EQ ACT	AI
11:30 am – 12:30 nn	Gen Math	Gen Math	Statistics	Gen Math	Bus Mgt
12:30 nn – 1:00 pm	Lunch/ Screen Break	Lunch/ Screen Break	Lunch/ Screen Break	Lunch/ Screen Break	Lunch/ Screen Break
1:00 pm – 2:00 pm	Bus Mgt	Bus Mgt	Bus Mgt	Bus Mgt	Bus Mgt
2:00 pm – 3:00 pm	English	English	English	English	English
3:00 pm – 4:00 pm	Elective	PASS	Science	Science	Science
4:00 pm – 4:30 pm			English-EEP		Homeroom (4:00 – 4:15 pm)
4:30 pm – 5:00 pm					

G12 CLASS SCHEDULE (ABM)

TIME	MON	TUE	WED	THU	FRI
8:30 am – 9:00 am	HR/Life	Assembly	Homeroom	Homeroom	Homeroom
9:00 am – 10:00 am	Bus Mgt	Bus Mgt	Bus Mgt	Bus Mgt	Bus Mgt
10:00 am – 10:30 am	Screen Break	Screen Break	Screen Break	Screen Break	Screen Break
10:30 am – 11:30 am	EQ ACT	Bus Mgt	Bus Mgt	Bus Mgt	Bus Mgt
11:30 am – 12:30 nn	Accounting	English	PASS	English	English
12:30 nn – 1:00 pm	Lunch/ Screen Break	Lunch/ Screen Break	Lunch/ Screen Break	Lunch/ Screen Break	Lunch/ Screen Break
1:00 pm – 2:00 pm	Accounting	Accounting	Accounting	Accounting	Accounting
2:00 pm – 3:00 pm	Elective	AI	English	Lang Acq	Lang Acq
3:00 pm – 3:30 pm			English-EEP	DRRM	Homeroom (3:00 – 3:15)
3:30 pm – 4:00 pm					
4:00 pm – 5:00 pm					

*Schedules may be subject to change

Asynchronous Activities

Asynchronous Bi-Weekly



G11 CLASS SCHEDULE (GAS)

TIME	MON	TUE	WED	THU	FRI
8:30 am – 9:00 am	HR/Life	Assembly	Homeroom	Homeroom	Homeroom
9:00 am – 10:00 am	Entrep	Entrep	Entrep	Entrep	Entrep
10:00 am – 10:30 am	Screen Break	Screen Break	Screen Break	Screen Break	Screen Break
10:30 am – 11:00 am	Gen Math	Gen Math	Gen Math	Statistics	
11:00 am – 11:30 am					
11:30 am – 12:30 nn	Elective	Fin Lit	Lang Acq	Lang Acq	EQ ACT
12:30 nn – 1:00 pm	Lunch/ Screen Break	Lunch/ Screen Break	Lunch/ Screen Break	Lunch/ Screen Break	Lunch/ Screen Break
1:00 pm – 2:00 pm	English	English	English	English	English
2:00 pm – 3:00 pm	Science	Science	Science	Science	PASS
3:00 pm – 3:30 pm		Science	AI	English-EEP	
3:30 pm – 4:00 pm					
4:00 pm – 4:30 pm					Homeroom (4:00 – 4:15 pm)
4:30 pm – 5:00 pm					

G12 CLASS SCHEDULE (GAS)

TIME	MON	TUE	WED	THU	FRI
8:30 am – 9:00 am	HR/Life	Assembly	Homeroom	Homeroom	Homeroom
9:00 am – 10:00 am	Pre Calculus	Pre Calculus	Pre Calculus	Pre Calculus	Pre Calculus
10:00 am – 10:30 am	Screen Break	Screen Break	Screen Break	Screen Break	Screen Break
10:30 am – 11:30 am	AI	Intro to Acctg	Intro to Acctg	Intro to Acctg	Intro to Acctg
11:30 am – 12:30 nn	Science	Science	Science	English	English
12:30 nn – 1:00 pm	Lunch/ Screen Break	Lunch/ Screen Break	Lunch/ Screen Break	Lunch/ Screen Break	Lunch/ Screen Break
1:00 pm – 2:00 pm	Lang Acq	Lang Acq	Elective	EQ ACT	PASS
2:00 pm – 3:00 pm	Intro to Acctg	English	English	English	
3:00 pm – 3:30 pm	English-EEP		DRRM		Homeroom (3:00 – 3:15)
3:30 pm – 4:00 pm					
4:00 pm – 5:00 pm					

*Schedules may be subject to change

Asynchronous Activities

Asynchronous Bi-Weekly



G11 CLASS SCHEDULE (HUMSS)

TIME	MON	TUE	WED	THU	FRI
8:30 am – 9:00 am	HR/Life	Assembly	Homeroom	Homeroom	Homeroom
9:00 am – 10:00 am	Soc Sci	Soc Sci	Soc Sci	Soc Sci	Soc Sci
10:00 am – 10:30 am	Screen Break	Screen Break	Screen Break	Screen Break	Screen Break
10:30 am – 11:30 am	Gen Math	Gen Math	Gen Math	Statistics	Soc Sci
11:30 am – 12:30 nn	Elective	Fin Lit	Lang Acq	Lang Acq	EQ ACT
12:30 nn – 1:00 pm	Lunch/ Screen Break	Lunch/ Screen Break	Lunch/ Screen Break	Lunch/ Screen Break	Lunch/ Screen Break
1:00 pm – 2:00 pm	Indivs & Societies	Indivs & Societies	Indivs & Societies	Indivs & Societies	Indivs & Societies
2:00 pm – 3:00 pm	Science	Science	Science	Indivs & Societies	PASS
3:00 pm – 4:00 pm	English	English	AI	English	English
4:00 pm – 4:30 pm		English		English-EEP	Homeroom (4:00 – 4:15 pm)
4:30 pm – 5:00 pm					

G12 CLASS SCHEDULE (HUMSS)

TIME	MON	TUE	WED	THU	FRI
8:30 am – 9:00 am	HR/Life	Assembly	Homeroom	Homeroom	Homeroom
9:00 am – 10:00 am	Psych/Pol Sci	Psych/Pol Sci	Psych/Pol Sci	Psych/Pol Sci	Psych/Pol Sci
10:00 am – 10:30 am	Screen Break	Screen Break	Screen Break	Screen Break	Screen Break
10:30 am – 11:30 am	Psych/Pol Sci	Soc Sci	Soc Sci	Soc Sci	Soc Sci
11:30 am – 12:30 nn	Soc Sci	Soc Sci	Math Studies	Math Studies	Math Studies
12:30 nn – 1:00 pm	Lunch/ Screen Break	Lunch/ Screen Break	Lunch/ Screen Break	Lunch/ Screen Break	Lunch/ Screen Break
1:00 pm – 2:00 pm	Lang Acq	Lang Acq	Elective	EQ ACT	PASS
2:00 pm – 3:00 pm	English	English	English	English	English
3:00 pm – 3:30 pm	English-EEP	AI	DRRM		Homeroom (3:00 – 3:15)
3:30 pm – 4:00 pm					
4:00 pm – 5:00 pm					

*Schedules may be subject to change

Asynchronous Activities

Asynchronous Bi-Weekly



G11 CLASS SCHEDULE (STEM)

TIME	MON	TUE	WED	THU	FRI
8:30 am – 9:00 am	HR/Life	Assembly	Homeroom	Homeroom	Homeroom
9:00 am – 10:00 am	Statistics	Precalculus	Precalculus	Precalculus	Precalculus
10:00 am – 10:30 am	Screen Break	Screen Break	Screen Break	Screen Break	Screen Break
10:30 am – 11:30 am	English	English	English	English	English
11:30 am – 12:30 nn	Science	Science	Science	Science	Science
12:30 nn – 1:00 pm	Lunch/ Screen Break	Lunch/ Screen Break	Lunch/ Screen Break	Lunch/ Screen Break	Lunch/ Screen Break
1:00 pm – 2:00 pm	PASS	Lang Acq	Lang Acq	EQ ACT	Science
2:00 pm – 2:30 pm	DRRM	AI	AI	English - EEP	Financial Literacy
2:30 pm – 3:00 pm				AI	
3:00 pm – 3:30 pm	Elective				Homeroom (3:00 – 3:15)
3:30 pm – 4:00 pm					

G12 CLASS SCHEDULE (STEM)

TIME	MON	TUE	WED	THU	FRI
8:30 am – 9:00 am	HR/Life	Assembly	Homeroom	Homeroom	Homeroom
9:00 am – 10:00 am	Sci Major	Sci Major	Sci Major	Sci Major	Sci Major
10:00 am – 10:30 am	Screen Break	Screen Break	Screen Break	Screen Break	Screen Break
10:30 am – 11:00 am	English	English		English	Sci Major
11:00 am – 11:30 am					
11:30 am – 12:30 nn	Math	Math	Math	Math	Math
12:30 nn – 1:00 pm	Lunch/ Screen Break	Lunch/ Screen Break	Lunch/ Screen Break	Lunch/ Screen Break	Lunch/ Screen Break
1:00 pm – 2:00 pm	Math	Sci Minor	Sci Minor	Sci Minor	English
2:00 pm – 3:00 pm	PASS	Lang Acq.	Lang Acq.	DRRM	Elective
3:00 pm – 4:00 pm	AI	AI	English	AI	EQ ACT
4:00 pm – 5:00 pm					Homeroom (3:00 – 3:15)

*Schedules may be subject to change



Asynchronous Activities



Asynchronous Bi-Weekly



IB CLASS SCHEDULE

TIME	MON	TUE	WED	THU	FRI
8:30 am – 8:45 am	Homeroom	Homeroom	Homeroom	Homeroom	Homeroom
8:45 am – 9:45 am	English Lang & Lit / Korean Lit	Psychology	English Lang & Lit / Korean Lit	Biology / Physics	Math AA/Math AI
9:45 am – 10:45 am	English Lang & Lit / Korean Lit	Psychology	English Lang & Lit / Korean Lit	Biology / Physics	Math AA/Math AI
10:45 am – 11:45 am	Psychology	Math AA/Math AI	Theatre/Visual Arts/History	Business Management	Business Management
11:45 am – 12:45 nn	Psychology	Math AA/Math AI	Theatre/Visual Arts/History	Business Management	Business Management
12:45 nn – 1:15 pm	Lunch/ Screen Break	Lunch/ Screen Break	Lunch/ Screen Break	Lunch/ Screen Break	Lunch/ Screen Break
1:15 pm – 2:15 pm	English B / French ab initio/Spanish ab initio	Theory of Knowledge	English B / French ab initio/Spanish ab initio	Chemistry	Chemistry
2:15 pm – 3:15 pm	English B / French ab initio/Spanish ab initio	Biology / Physics	English B / French ab initio/Spanish ab initio	Chemistry	Theatre/Visual Arts/History
3:15 pm – 4:15 pm	Theory of Knowledge	Biology / Physics	Chemistry	Academic Writing/CAS	Theatre/Visual Arts/History

Note:

Asynchronous Activities

Each 2-hour class will have a 10-minute screen break after the 1st hour.

After-School Program (ASP) is scheduled after class.