

Southville International School and Colleges



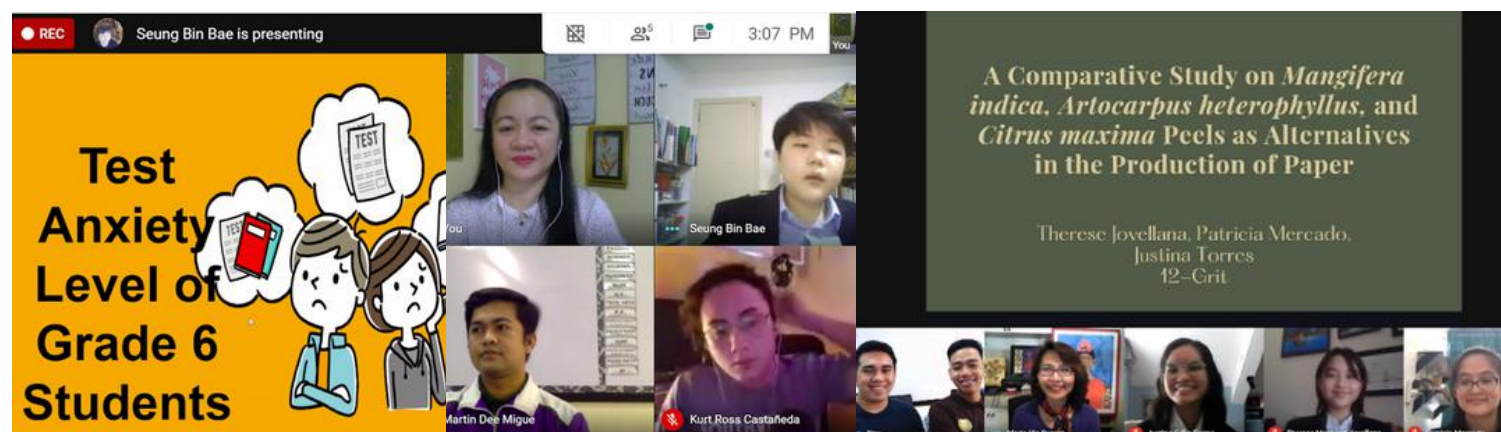
STUDENTS AND PARENTS' BULLETIN

Internationally Accredited by the Western Association of Schools and Colleges; Recognized by the Department of Education as a School of the Future; An International Baccalaureate (I.B.) Authorized World School; Investors in People Gold Awardee; ISO 9001:2008 Certified

Students embrace online PASS defense

Grades 6 & 12 students from Southville International School and Colleges (SISC) aren't going to let a global pandemic stop them from fulfilling their graduation requirements and getting their diploma. The first cohort of graduating students did the oral defense of their Portfolio Assessment of Southville Students (PASS) research paper via the Google Meet video conferencing platform. SISC has arranged a process for students to conduct their thesis defense online while still following the high standards in evaluating the papers.

The format of the defense was just as it would be in person except for sharing the screen to display the slideshow, keeping the microphone muted and doing a virtual "hand raise" to ask a question. The students noted how less nervous they were defending from their bedroom or living room, and appreciated how family members and friends from other parts of the world could suddenly watch their defenses online. Their loved ones who would otherwise have totally missed the event were able to share in this big, momentous day in their lives.



Su Bin Park is presenting

Section 2: Summary of Evidence

Source C

Source C: Women Victims in World War II

- Details of what comfort women had undergone during their lives in the comfort stations.

Source I

Source I: The Truth of the Japanese Military "Comfort Women"

- Included the responses of the Japanese government regarding the issue.

Source L

Source L: The 2020 Korea-Japan Relations and Policy toward Japan: A Solution of Conflict in the Viewpoint of View.

- Discuss the conflict between Korea and Japan.

Clarise Bryanah A. Liu is presenting

Pambabatok: the history of dying art

Hi-PASS defense presentation
Clarise Bryanah A. Liu
12 diploma

March 5, 2021

2:34 PM

Section 1 - Plan of Investigation

Brief Background of Feminism in the Philippines

```

graph TD
    A[Japanese Occupation] --> B[Women's suffrage that took 30 years to happen]
    A --> C[Gender women fighters fighting the Japanese soldiers]
    B --> D[During the Philippine - American War women had a part to play in war]
    C --> E[Feminism]
    E --> F[The Colonial Filipino Women were a large part of the ideal of a equal society]
    F --> G[Spanish Colonization]
    G --> H[Resistance leaders and women protection]
    H --> I[Philippine Revolution]
    I --> D
    
```

Francisca Velasco

Sunny Patron

María Patricia Belloza

Viral Filtration of Surgical Masks and Improvised Masks

Hyun Seo Ryu is presenting

Glutathione Level of *Dionaea muscipula* Fed With *Musca domestica* and *Gynnidomorphia alismiana*

Magno, Malabanan, & Ramirez
12 - Grit

SECTION 4 (INCOME STATEMENT)

| (PFRS) Income Statement The year ending December (in Peso) | |
|---|--------------|
| Revenue | 1,108,800.00 |
| Less: Sales | 1,108,800.00 |
| Expenses: | |
| Maintenance | 120,000.00 |
| Advertising | 14,400.00 |
| Social Media Advertising | 35,000.00 |
| Legal Fees | 132,000.00 |
| Miscellaneous | 72,000.00 |
| Utilities | 20,040.00 |
| Insurance | 9,000.00 |
| Depreciation Expense | 32,540.00 |
| Total Operating Expense | 436,200.00 |
| Net Income | 672,520.00 |

John Rod Balagtas is presenting

P.A.S.S. RESEARCH ORAL PRESENTATION of MS. ALIYA-MYE SOUDAH

SOUTHVILLE
INTERNATIONAL SCHOOL AND COLLEGES

GENDER-BASED DIFFERENCES IN THE INTERCULTURAL SENSITIVITY OF THIRD CULTURE KIDS

Aliya-Mye Samarista Soudah
12-Rigor
Feb 18, 2021

John Rod Balagtas

Aliya-Mye Soudah

Mark Ernest Babelo

Standardized test dates set

To better understand the overall academic performance of students while learning online, SISC will virtually conduct the annual Standards-Based Assessment (SBA) in English, Math and Science from Grades 7 – 10. The SBA results certify students' mastery of content and skills in a specific subject before they move on to the next grade level. The initial schedule is as follows:

For Grades 7 - 10

Day 1: March 29, 2021 (Monday)
English (10:15AM - 12:15PM)

Day 2: March 30, 2021 (Tuesday)
Science (10:15AM - 12:15PM)

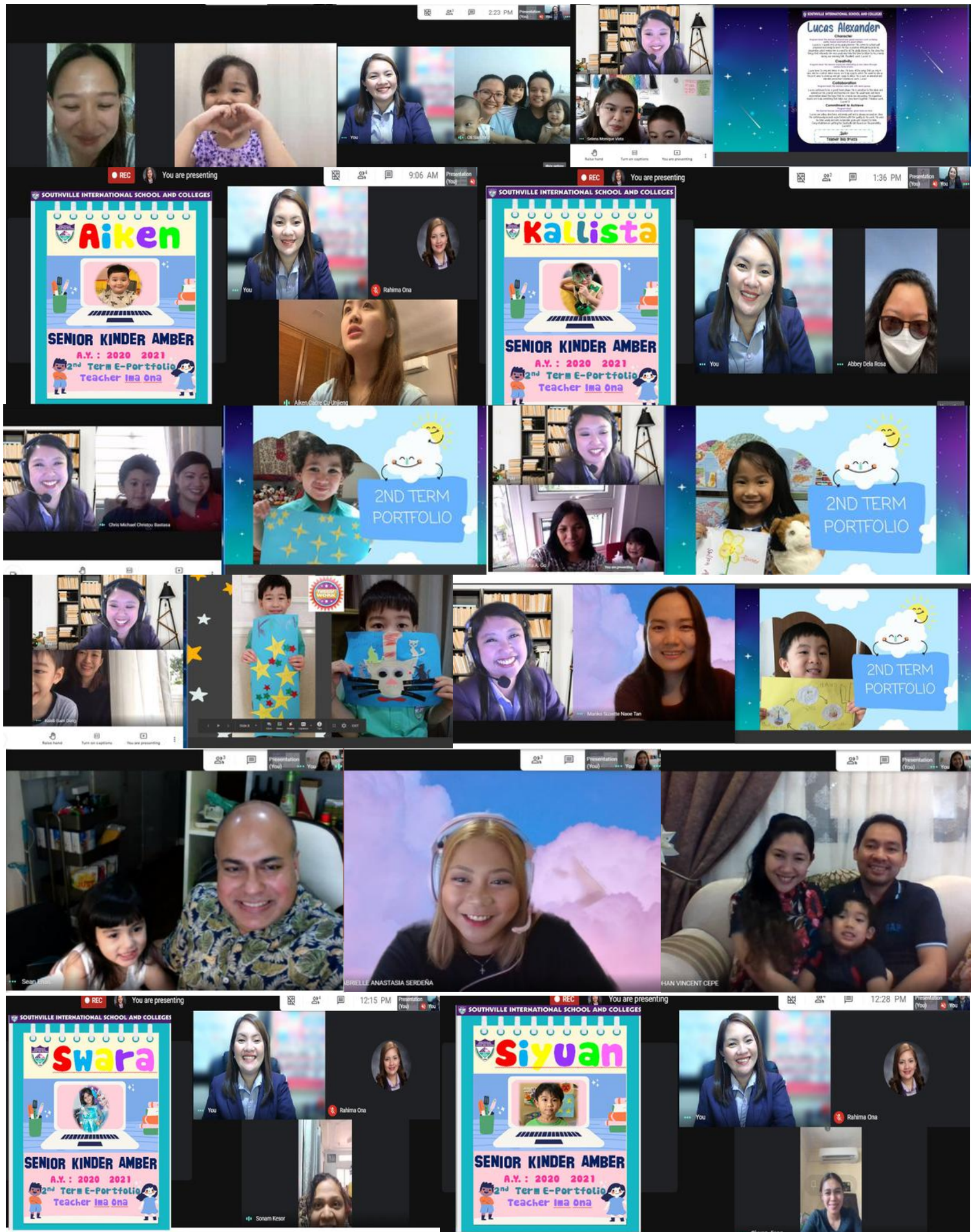
Day 3: March 31, 2021 (Wednesday)
Math (10:15AM - 12:15PM)

Thank you for attending the virtual PTC

We extend our heartfelt thanks to all the parents and guardians who attended the virtual Parent-Teacher Conference (PTC) regarding your child's school performance during the Second Term. We appreciate your taking the time to meet with your child's class adviser and developing a shared understanding of how your child can make academic progress given this unique moment in time all learners are experiencing. We look forward to our continued partnership throughout the remainder of the school year.



K12 2nd Term PTC



K12 2nd Term PTC

Senior Kinder Amber
A.Y.: 2020-2021
2nd Term E-Portfolio
Teacher: Ima Ona

Senior Kinder Amber
A.Y.: 2020-2021
2nd Term E-Portfolio
Teacher: Ima Ona

Senior Kinder Amber
A.Y.: 2020-2021
2nd Term E-Portfolio
Teacher: Ima Ona

Teacher's Remarks

| SUBJECT | AREAS OF STRENGTH | GROWTH AREAS |
|---------|---|--|
| English | Santino shows eagerness in learning new concepts in reading. He always does his best and knows that his hard work will help him overcome any difficulties. | He is encouraged to do more reading exercises and learn strategies in getting context clues to help him overcome challenges in reading comprehension and reading strategies. |
| Math | Santino works quietly in class. He raises his hand if he wants to ask questions. He also participates actively during our class discussions. He submits quality output before the deadline. | Congratulations Santino! You've done great this Second term! Please keep it up. |
| Science | Santino always comes to class prepared and ready to learn. He can answer questions well during class discussions. He is not afraid to ask questions in class. Keep up the good work, Santino! | |

REPORT CARD

| SUBJECTS | TERM | | | FINAL GRADE | ACTION TAKEN | UPDATES |
|-----------------------------|------|----|---|-------------|--------------|---------|
| | 1 | 2 | 3 | | | |
| Mathematics 3 | VS | VS | | | | |
| Science 3 | S | S | | | | |
| English 3 | S | AA | | | | |
| SLGE 3 | VS | VS | | | | |
| SLGE History 3 | VS | VS | | | | |
| SLGE Leadership 3 | VS | VS | | | | |
| Filipino/Special Filipino 3 | S | S | | | | |
| ICT 3 | S | S | | | | |
| MAPE 3 | VS | VS | | | | |
| Music 3 | NA | NA | | | | |
| Art 3 | NA | NA | | | | |
| Physical Education 3 | VS | VS | | | | |
| Foreign Language 3 | VS | VS | | | | |
| Values Education 3 | VS | VS | | | | |
| LIFE/ GNP 3 | VS | VS | | | | |
| Co-Curricular Involvement 3 | VS | VS | | | | |

Student Progress Report

- E-Portfolio
- Assessment Results
- Report Card
- Teacher's Remarks
- Calendar of Activities

Student Progress Report

- E-Portfolio
- Report Card
- Teacher's Remarks
- Calendar of Activities

Calendar of Activities

| Month | Grade 3 Family Day |
|-------------------|--|
| March 23-24 | 3rd Math Fair Test |
| March 25 | Asynchronous Classes |
| March 26-30 | May Week Break |
| March 31, April 1 | Day Home |
| April 2-4 | Long Test #2 |
| April 5-6 | 2nd Term Exam |
| April 26-30 | Self Day of School for Non-graduating Students |
| May 1 | Registration Day (Scheduled Parents' T) |
| June 1 | Third Term Parents' Conference |

REPORT CARD

2. Character Education and Social Studies and/or

3. Character Education and Social Studies and/or

4. Character Education and Social Studies and/or

5. Character Education and Social Studies and/or

6. Character Education and Social Studies and/or

7. Character Education and Social Studies and/or

8. Character Education and Social Studies and/or

9. Character Education and Social Studies and/or

10. Character Education and Social Studies and/or

11. Character Education and Social Studies and/or

12. Character Education and Social Studies and/or

13. Character Education and Social Studies and/or

14. Character Education and Social Studies and/or

15. Character Education and Social Studies and/or

16. Character Education and Social Studies and/or

17. Character Education and Social Studies and/or

18. Character Education and Social Studies and/or

19. Character Education and Social Studies and/or

20. Character Education and Social Studies and/or

21. Character Education and Social Studies and/or

22. Character Education and Social Studies and/or

23. Character Education and Social Studies and/or

24. Character Education and Social Studies and/or

25. Character Education and Social Studies and/or

26. Character Education and Social Studies and/or

27. Character Education and Social Studies and/or

28. Character Education and Social Studies and/or

29. Character Education and Social Studies and/or

30. Character Education and Social Studies and/or

31. Character Education and Social Studies and/or

32. Character Education and Social Studies and/or

33. Character Education and Social Studies and/or

34. Character Education and Social Studies and/or

35. Character Education and Social Studies and/or

36. Character Education and Social Studies and/or

37. Character Education and Social Studies and/or

38. Character Education and Social Studies and/or

39. Character Education and Social Studies and/or

40. Character Education and Social Studies and/or

41. Character Education and Social Studies and/or

42. Character Education and Social Studies and/or

43. Character Education and Social Studies and/or

44. Character Education and Social Studies and/or

45. Character Education and Social Studies and/or

46. Character Education and Social Studies and/or

47. Character Education and Social Studies and/or

48. Character Education and Social Studies and/or

49. Character Education and Social Studies and/or

50. Character Education and Social Studies and/or

51. Character Education and Social Studies and/or

52. Character Education and Social Studies and/or

53. Character Education and Social Studies and/or

54. Character Education and Social Studies and/or

55. Character Education and Social Studies and/or

56. Character Education and Social Studies and/or

57. Character Education and Social Studies and/or

58. Character Education and Social Studies and/or

59. Character Education and Social Studies and/or

60. Character Education and Social Studies and/or

61. Character Education and Social Studies and/or

62. Character Education and Social Studies and/or

63. Character Education and Social Studies and/or

64. Character Education and Social Studies and/or

65. Character Education and Social Studies and/or

66. Character Education and Social Studies and/or

67. Character Education and Social Studies and/or

68. Character Education and Social Studies and/or

69. Character Education and Social Studies and/or

70. Character Education and Social Studies and/or

71. Character Education and Social Studies and/or

72. Character Education and Social Studies and/or

73. Character Education and Social Studies and/or

74. Character Education and Social Studies and/or

75. Character Education and Social Studies and/or

76. Character Education and Social Studies and/or

77. Character Education and Social Studies and/or

78. Character Education and Social Studies and/or

79. Character Education and Social Studies and/or

80. Character Education and Social Studies and/or

81. Character Education and Social Studies and/or

82. Character Education and Social Studies and/or

83. Character Education and Social Studies and/or

84. Character Education and Social Studies and/or

85. Character Education and Social Studies and/or

86. Character Education and Social Studies and/or

87. Character Education and Social Studies and/or

88. Character Education and Social Studies and/or

89. Character Education and Social Studies and/or

90. Character Education and Social Studies and/or

91. Character Education and Social Studies and/or

92. Character Education and Social Studies and/or

93. Character Education and Social Studies and/or

94. Character Education and Social Studies and/or

95. Character Education and Social Studies and/or

96. Character Education and Social Studies and/or

97. Character Education and Social Studies and/or

98. Character Education and Social Studies and/or

99. Character Education and Social Studies and/or

100. Character Education and Social Studies and/or

My 2nd Term VOLT Journey

- Math
- Science
- English
- Filipino
- PE
- ACT
- SLGE

A collection of my favorite work for each VOLT subject

STUDENT PROGRESS REPORT AY 2020-2021

CHUA CHRISTIAN

STUDENT PROGRESS REPORT AY 2020-2021

YAP FRANCO JOAQUIN O

Collaboration

What does collaboration mean to you? How do you collaborate with your classmates?

How did your teacher help you? What can your teacher do to help you more?

Our teachers gave us instructions and helped us clarify some of our unclear ideas. The teacher can extend their help through giving positive feedbacks and constructive criticisms.

SCIENCE

CHOSEN ECOSYSTEM

Attach here links or pictures of your Science learning activities.

K12 2nd Term PTC

MATH

1. The most challenging topic I had in 2nd term is word problems on multiplying fractions.
2. I would watch videos to understand the lesson.
3. Decimals were my favorite topic for math 2nd term.
4. My Journey in 2nd term Math was kind of difficult. I would study the topic I don't understand by watching videos at the end of class. But when I studied more it wasn't that difficult anymore.

At last here links or pictures of your Math learning activities.

STUDENT PROGRESS REPORT AY 2020-2021
TEOH NATHALIE G.

In order to maintain or improve my performance, I commit to achieve my goals.

I CAN and I WILL.

Character

What kind of student would you like to be? List down three aspects. Why? Give 1 job to become the student, you would like to be.

Smart and kind good of Social Life.

2nd Term Parent-Teacher Conference
12 March 2021 | via GMeet

My Math GIDES

This is the Math GIDES activity wherein we made a fraction of the vertebrate and invertebrate animals in my Safari associations.

Pt Fraction Art

This activity is about making an art out of fractions. We were asked to create an art out of fraction shapes and this is what I've come out. I counted the total number of shapes for the denominator and counted the same colors for the numerator. We also had comparing adding and subtracting fractions.

PASS UPDATE

PASS Presentation rescheduled: March 25, 2021

PASS Adviser: Ms. Carla Villanueva
(carlag@southville.edu.ph)

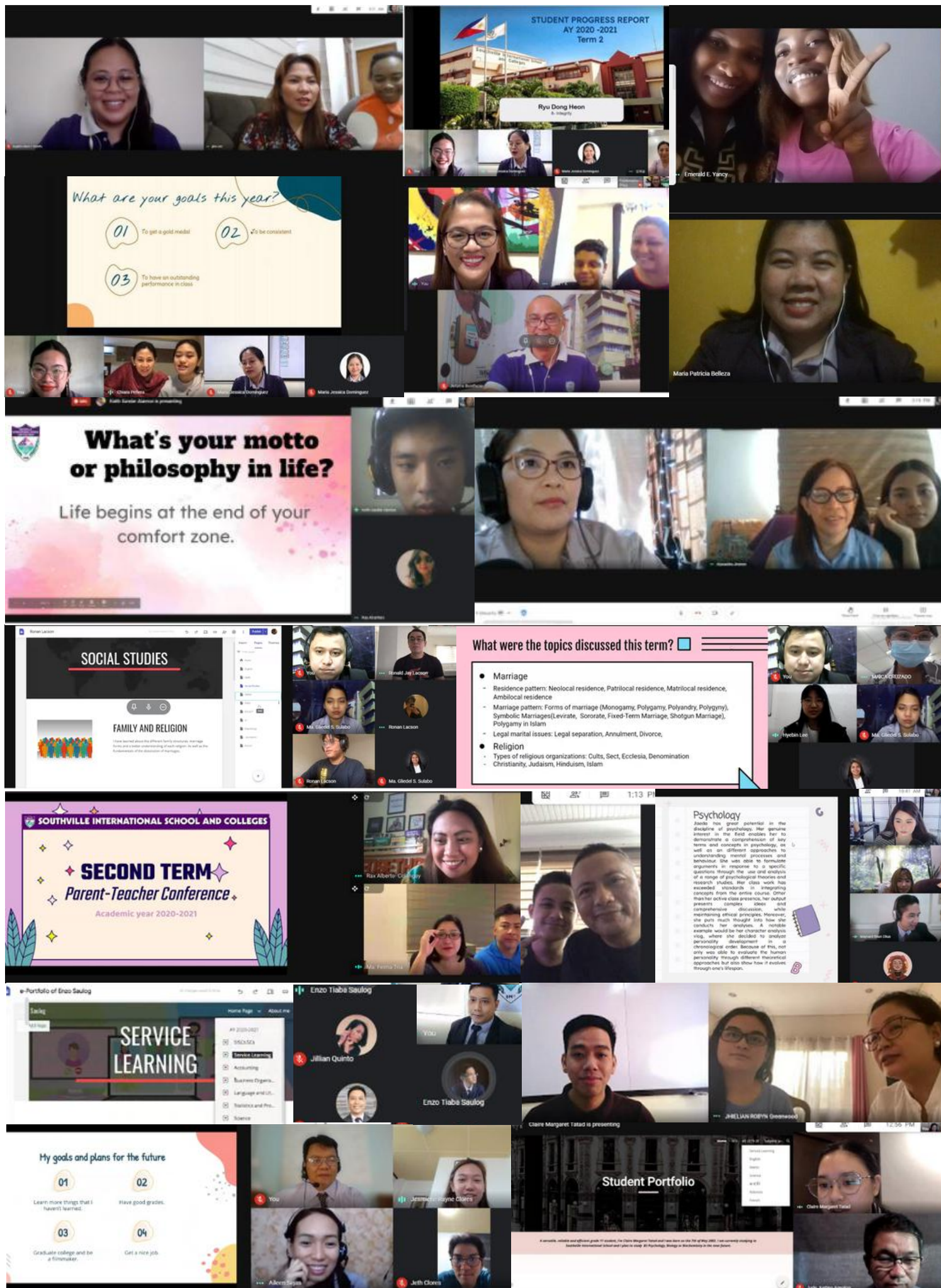
QUESTION AND ANSWER Corner

VOL COMMENDATIONS AND SUGGESTIONS ARE MUCH APPRECIATED.

Michael Gravaman is presenting

Grade 7- Graditude VOLT

K12 2nd Term PTC



Reservation for academic year 2021-2022 is now open

Dear Parents/Guardians,

Warm Greetings!

Academic Year 2020-2021 is nearing its end and we would like to thank you for your trust and strong support for Southville International School and Colleges (SISC). We are happy to share with you that we recently gave a virtual tribute to our outstanding alumnus, Gen Mark Tanno, who started with us at the age of five and just now graduated summa cum laude from the Georgia Institute of Technology, U.S.A. with double majors in Aerospace Engineering and Computer Science.

On a different note, we transitioned to Virtual Online Learning and Teaching (VOLT), benchmarked with top virtual online teaching standards in the US since March 2020 and delivered what we committed to do which is to ensure student achievement even with the shift to online platforms. The Southville VOLT also creates spontaneous learning experiences in the virtual presence of classmates and teachers, thus providing opportunities for socio-emotional support and connection.

As part of efficient resources management, we would like to make a realistic projection of the student population for A.Y. 2021-2022. To achieve this, we need to determine how many of our present students are re-enrolling and how many of their siblings are enrolling as new students. For new students, we give priority to the siblings of our old students. Through this, we can allocate slots for new student applicants who qualify for admission. Below are the planned modes of learning for Academic Year 2021-2022:

| Mode of Learning | Schedule | Set-Up |
|--|---|--|
| Virtual Online Learning and Teaching or VOLT | 1st to 3rd Terms | Combination of synchronous and asynchronous online classes; same setup as AY 2020-2021 |
| Blended Learning | As soon as face-to-face classes are permitted by the government | Partial Face-to-Face and VOLT |

In this regard, kindly fill out the online early enrollment reservation form and send to pr@southville.edu.ph as soon as possible. There will be NO INCREASE in the tuition fee while we are on VOLT. A supplementary increase will be charged though once we are back to face to face. Preschool, Grade School, and High School students who have fully paid their accounts, have no academic deficiency, and have no discipline issues can already reserve a slot for academic year 2021-2022:

A. Early Enrollment:

There will be an early enrolment discount for students who will enroll from April 2021 to May 2021.

B. Alumni Discount

a. Dependents of alumni who will be enrolling at SISC will enjoy an Alumni Discount.

b. Alumni who wish to pursue their graduate studies (MA in Business Administration, Master in Information Technology, Master of Arts in Psychology) at SISC will enjoy a discount of 10% on tuition fee for one term and 5% on the subsequent terms.

C. Share the Southville Experience

For the Academic Year 2021-2022, we are launching our Share the Southville Experience to students and parents who have friends, relatives, and family members who wish to join the Southville Community. Share with us their names and contact information through the Share the Southville Experience Form, and we will reach out to them to explain the Southville programs. We will also acknowledge you in a tangible manner for sharing your pride of the Southville experience. For any inquiries about the program, please contact Elyds Reyes or Gerlie Montellano of our Public Relations Team via pr@southville.edu.ph.

D. Express your AY 2020-2021 Experience

As we prepare for A.Y. 2021-2022, we would also appreciate it if you can give us your input on the school's performance this academic year and share feedback on how we can surpass our students' achievements. Please answer the questions on the second page of this letter. We thank you for your unwavering support to the school and we look forward to another successful partnership with you towards your child's educational success for A.Y. 2021-2022.

Reservation Slip for A.Y. 2021 - 2022

Upcoming Events

KNOW MORE ABOUT OUR K-12 PROGRAM

Virtual Online Learning and Teaching (VOLT)



March 13, 2021 | 10 AM

southville.edu.ph

8825 - 6374

09178532450

BE AMAZING. BE SOUTHVILLE.



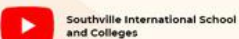
Register Now!



HOW TO BE HAPPY WHILE AT WORK?

**Happiness Webinar for Caregivers and Drivers*

March 27, 2021 | 10:00 AM



BE AMAZING. BE SOUTHVILLE.

southville.edu.ph | 8825 - 6374 | 09178532450

Register Now!



Other upcoming events



SOUTHVILLE INTERNATIONAL SCHOOL AND COLLEGES

Hello, Monarchs!
OPEN HOUSE
JUNIOR HIGH SCHOOL


March 19, 2021 | 3:00 PM
via  **zoom**

Scan the QR Code to Join the Event

Virtual Campus Tour
Orientation
Games and Fun Activities

8825 6374 | pr@southville.edu.ph

Register Now!



SOUTHVILLE INTERNATIONAL SCHOOL AND COLLEGES

 **VIRTUAL OPEN HOUSE**
Early Childhood Education Division
DIGITAL PARENTING FOR DIGITAL LEARNERS

March 27, 2021
9:00am - 11:00AM
1:00PM - 3:00PM

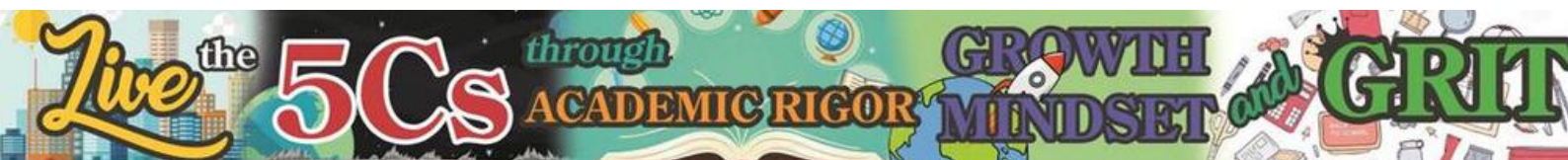
Fully Accredited by 



ORIENTATION
VIRTUAL CAMPUS TOUR
TRIAL CLASS

CONTACT US
8825 - 6374 loc 100 | pr@southville.edu.ph

Register Now!



Please acknowledge that you received the e-bulletin. Acknowledgment of this email won't require you to submit reply slips. Kindly click the link below:

[Acknowledgment Form](#)

Marie Vic F. Suarez, Ph.D.
Principal, K12 and IB

Basic Ed Bulletins