



SPB ISSUE NO. 01

A.Y. 2025 -2026 / August 22, 2025



STUDENTS AND PARENTS' BULLETIN

SOUTHVILLE INTERNATIONAL SCHOOL AND COLLEGES

WELCOME MESSAGE FROM THE PRINCIPAL

With hearts full of hope and minds eager to share new knowledge, we welcome our amazing students back to Southville International School and Colleges (SISC)! I have enjoyed walking around the halls, peeking into classrooms, and seeing the engaged learning happening across our campuses. Thank you for a smooth and joyful opening of classes by doing the small things right, from coming to school on time and ready to learn to wearing the school uniform well and trying your best in class activities.



*Marie Vic F. Suarez, PhD
Principal, K12 and IB*

I would like to extend a warm greeting to our new students and their families who are now part of our Monarch family. We are thrilled to have you as part of our vibrant and diverse school community, and it is my goal to get to know each and every one of you.

Vision

Southville International School and Colleges is recognized nationally and globally in the delivery of international education to develop lifelong learners, excellent in academics and values, and movers of society who will make a difference in the 21st century.



Mission

SISC is committed to develop lifelong learners who are equipped with the 5Cs (Competence, Character, Commitment to Achieve, Collaboration, Creativity/Innovation) through data-driven and technology-enhanced educational programs to ensure student success in the 21st century.

We are confident that once you have acclimated yourself to your new surroundings and learn the rhythm of the school, you will find SISC a place where learners thrive academically, socially, and emotionally.

To our returning students, I am delighted to welcome you back for another year of growth and accomplishment. We are so proud of the work you have done last school year, and are pleased that you are continuing your educational journey with us. It's been wonderful seeing all of you return with laughter, with friendships old and new, and a strong sense of purpose to soar to new intellectual and personal heights. We look forward to seeing you improve by leaps and bounds as you show up, participate, and embrace the spirit of lifelong learning.

We are going to have an outstanding 2025-2026 academic year as we mark 35 years since SISC first opened its doors to learners. While we have made tremendous strides in student growth and achievement in the past three decades and a half, we will continuously strive to do better and surpass our students, parents, and community's greatest expectations. We will continue to set the bar for student goals high because you truly deserve the best educational experience.

Here's to a phenomenal school year!



SISC IB CLASS OF 2025 SURPASSES GLOBAL STANDARDS AND PRODUCES TOPNOTCHERS

Southville International School and Colleges (SISC) proudly celebrates the exceptional performance of its **International Baccalaureate (IB) Class of 2025**, who once again **surpassed the global benchmarks** in the May 2025 IB Examination Season.

SISC students achieved an impressive **mean score of 34.0**, well above the **IB World Average of 30.08**. This achievement affirms Southville's commitment to academic excellence, critical thinking, and global citizenship—hallmarks of the IB Diploma Programme.

Further demonstrating their strength across disciplines, our students attained a **high mean score of 5.3**, compared to the global mean of 4.90. This consistent above-average performance across subjects reflects the quality of instruction and the dedication of both students and faculty.

Adding to these achievements, SISC **proudly produced two topnotchers** this year:

Brielle Rodriguez, who earned an outstanding **44 out of 45 points**, just one point shy of a perfect score



Liam Mead, who garnered an equally impressive **43 out of 45 points**.

These remarkable scores place them among the top-performing IB students worldwide, a feat that speaks volumes about their intellectual discipline and the strong academic environment nurtured at Southville.

To the IB Class of 2025, we salute your excellence, resilience, and pursuit of greatness. You are proof that the Southville Monarch spirit continues to rise above and beyond.

SISC STUDENTS RATE THEIR EXPERIENCE: INSTITUTIONAL SURVEY RESULTS AY 2024-2025

We are pleased to share the results of the Year-End Institutional Survey conducted among students of Southville International School and Colleges (SISC) last May 2025. With 277 student respondents across grade levels, the survey provides valuable insights into the effectiveness of our programs and services from the learners' perspective.

We are proud to report an overall average satisfaction rating of 4.58 out of 5.00, reflecting the continued commitment of the school to providing a holistic, engaging, and future-ready education.

HIGHLIGHTS OF THE SURVEY

• **Curriculum and Instruction – 4.53**

Students commended the effectiveness of the curriculum in developing competencies, creativity, and character. Special mentions include high ratings for the Growth Mindset/GRIT Approach (4.56), school activities (4.57), and the effectiveness of learning modes (F2F, HyVOLT, VOLT) at 4.59.

• **Faculty – 4.60**

Our dedicated teachers earned top marks for competence (4.60) and for their consistent communication with parents (4.62).

• **Organizational Support and Home-School Collaboration – 4.60**

Students acknowledged the safe and caring environment, while parent-teacher initiatives such as Coffee Chats and Parent-Teacher Conferences were highly rated (4.66), as were tools like the Student & Parent Bulletin (4.65) and Learning Logs (4.65).

- **Academic Support Services – 4.62**

Departments like the Clinic (4.67), Library (4.66), and Student Affairs (4.66) led the way in delivering excellent support to learners throughout the year.

- **Administrative Services – 4.55**

SISC's Security (4.68) and Accounting (4.63) offices were recognized for their reliability and service, while facilities like the Computer Lab (4.61) and Physical Facilities (4.59) were also highly rated.

A Note to Our Parents

While the student survey saw robust participation, the **parent response rate was limited to only nine respondents**. As such, we will not be publishing the parent survey results this cycle. However, **please know that your voices are heard**. Your feedback, though few in number, was constructive and heartfelt. We strongly encourage more parents to take part in future surveys so we can continue improving in partnership with you.

Thank you to our dear students for your feedback, and to our entire community for helping make Southville a place where every learner can thrive. With your continued involvement, we will keep pushing forward—building better programs, strengthening relationships, and championing excellence in education.



Leadership Team for K12 and IB Academic Year 2025-2026



Dr. Marie Vic Suarez
Principal



Ms. Jenny Fonte
Deputy Principal
(STAR Campus)



Ms. Sheryl Manalo
Deputy Principal
(Munich Campus)



Ms. Junessa Lumbres
Deputy Principal
(Lux Campus)



Ms. Angela Kaiser
Asst. Deputy Principal
(Munich Campus)



Ms. Armie Ababa
IB Coordinator



Ms. Dabe Salibio
Asst. IB
Coordinator

Leadership Team for K12 and IB Academic Year 2025-2026



Ms. Annabel Vasquez
Discipline Head



Ms. Patricia Belleza
Student Affairs
Coordinator



Ms. Angeline Dumlao
Special Programs
Coordinator

DESIGNATION	SUBJECT AREA HEADS
English Grade School, ESL & SLGE	Ms. Mayi Seva
Grade School PASS Coordinator for Descriptive	Ms. Melanie Rongavilla
Math (Grades 1-6)	Ms. Giselle Galisanao
Science & Special Subjects (Grades 1-6)	Ms. Leslie Dela Cruz
Math (Grades 7-12)	Ms. Judy Arguelles
Science (Grades 7-12)	Ms. Rachel Chua
English (Grades 7-12)	Ms. Zarah Trogo
AI/ICT and Robotics	Mr. Michael Gravamen
SLGE	Mr. Joseph Gregorio

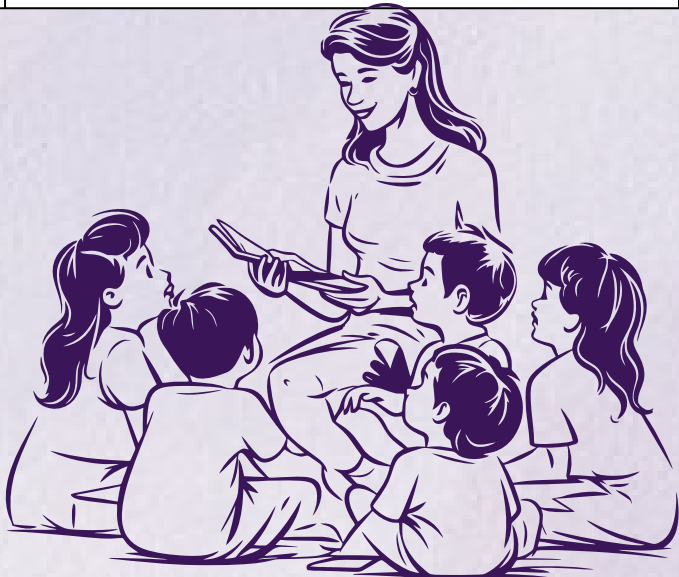
DESIGNATION	SUBJECT AREA HEADS
Business and Financial Literature	Ms. Abigail Vallente
Filipino and Special Subjects	Mr. Mark Joseph Asoy
Foreign Languages	Mr. Leo de Mesa
Counseling & Psychological Services	Ms. January Gutierrez
IB Extended Essay Coordinator	Ms. Armie Ababa
IB CAS Coordinator	Ms. Dabereth B. Salibio
Head of Athletics	Mr. Rory Mansbridge
PASS Chairpreson	Ms. Sunny Patron
PASS Chairperson for Grade School	Ms. Sheryl Manalo
PASS Coordinator for Business Research	Ms. Angeline Dumlao
PASS Coordinator for Historical Investigation	Mr. Joseph Gregorio
PASS Coordinator for Descriptive Research	Ms. Zarah Trogo
PASS Coordinator for Experimental Research	Ms. Jam Estropigam
PASS Statistician	Mr. Marvin Revilla
Service Learning	Ms. Gliedel Sulabo
Vision and Task Circle	Mr. McDaryl Pedro



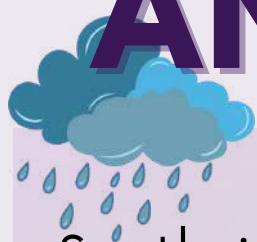
**TEACHING IS A
WORK OF HEART**

LEVEL	LEVEL FACILITATORS
Preschool to 5th Grade (STAR Campus)	Ms. Selena Vista
Preschool to Grades 1 & 2 (ECED, Munich Campus)	Ms. Angela Kaiser
3rd Grade	Ms. Michelle Albarillo
4th Grade	Ms. Nina Siy
5th Grade	Ms. Mara de Leon
6th Grade	Ms. Hannamie Robrigado
7th Grade	Mr. Erik Lloyd Timpug
8th Grade	Mr. Aron Tuppal
9th Grade	Ms. Hanns San Esteban
10th Grade	Mr. Mark Joseph Asoy
11th Grade	Ms. Bernadette de Vela
12th Grade	Ms. Lady Jamie Estropigan

teach
Love
INSPIRE



CLASS SUSPENSION ANNOUNCEMENT



Southville International School and Colleges (SISC) **follows the official suspension of classes declared by the Local Government Units (LGUs)** where our campuses are located:

- **Las Piñas** – for Munich, Tropical, and Luxembourg Campuses
- **Parañaque** – for the STAR Campus

In the event of such declarations, all face-to-face classes are automatically cancelled. The school will decide whether to shift to online synchronous (VOLT) or asynchronous learning. Please wait for further announcements.

Students are advised to make productive use of the day by working on their assigned **IXL tasks in Math, English, and Science.**

Please stay safe and stay updated through our official communication channels.



In the event that the Local Government announces the late-day suspension of classes, it's important to be aware that all classes, both those conducted in person and those held online, will conclude on this staggered basis:

LEVEL	TIME
Preschool to Grade 2	11:00 AM
Grades 3 to 6	12:00 PM
International Baccalaureate	12:30 PM
Grades 7 to 12	1:00 PM

Students with siblings will join the dismissal of the youngest sibling. This coordinated dismissal time serves two crucial purposes: firstly, it prioritizes the safety and convenience of our students, and secondly, it contributes to the reduction of traffic congestion in the area.

We believe that this flexibility will provide a safer alternative for students and parents during adverse weather condition. Here are some key points to note:

Safety First: Your child's safety is our utmost priority. We want to ensure that they can continue their education without putting themselves at risk during challenging weather condition.

Online Attendance: Students attending classes online will be marked as present, just as if they were physically present at school. This ensures that their perfect attendance record remains intact.



STARS, HEARTS, AND LAURELS: ALUMNI ACHIEVERS SPOTLIGHT

Welcome to our "Alumni Achievers Spotlight" – a dedicated corner where we celebrate the remarkable accomplishments of our former students. Our alumni have gone on to achieve great success in various fields, serving as a source of inspiration for current students and parents alike. In this space, we will share their inspiring stories, achievements, and the valuable lessons they've learned on their journey from our school to their dreams. Join us in celebrating the excellence of our alumni and discover the limitless possibilities that await our current students.



Southville didn't just focus on academics—it gave me a strong foundation in research.

Looking back at my time at Southville, I truly appreciate how much it shaped who I am today. The well-rounded curriculum and the support from my teachers prepared me not just for college and medical school but also for my career as a doctor. Southville didn't just focus on academics—it gave me a strong foundation in research. My early exposure to research methodologies through P.A.S.S. was incredibly helpful in the countless research projects I've had to do throughout my medical journey. I also appreciate how inclusive and diverse the Southville community is. Everyone's unique background was embraced, making it a place where I felt truly at home.



PRINCESS SITTIE

High School Alumni | Batch 2009

Internal Medicine Resident Doctor

Licensed Pharmacist

ACCESS TO THE STUDENT HANDBOOK AND ACKNOWLEDGMENT FORM

We would like to inform you that the Student Handbook is now accessible online. You may view or download it through the following link:

[Student Handbook](#)

It is also available under the Useful Links section of K12 Moodle and in the Files section of ManageBac for IB students.

We strongly encourage all parents and students to read and understand the contents of the Student Handbook to help ensure a safe, respectful, and positive learning experience for everyone.

Once you have reviewed the handbook, please confirm your receipt and understanding by completing the Acknowledgment Form:

[Acknowledgment Form](#)

BACK TO SCHOOL ROAD COURTESY AND SAFETY REMINDERS

Road courtesy within the vicinity of SISC fosters a safer, more organized, and more pleasant environment for everyone. Observing road courtesy is essential in a school environment to ease traffic flow and ensure:



Safety of Stakeholders: In SISC, we have a number of students and staff who commute to and from school. Courteous driving, such as yielding to pedestrians and adhering to speed limits, significantly enhances their safety.

Efficient Traffic Movement: Courteous behavior, like allowing other drivers to merge, avoiding blocking intersections and adhering to **NO DROP OFF/PICK UP ZONES**, helps maintain a steady flow of traffic. This is especially important during peak hours like arrival and dismissal times.

Reduced Stress and Conflicts: Politeness on the road can minimize road rage and conflicts among drivers, creating a more peaceful and orderly environment.

Positive Role Modeling: Adults who exhibit road courtesy set a good example for children, teaching them the importance of following traffic rules and being considerate to others.

Emergency Access: In case of an emergency, courteous driving ensures that roads are not blocked and emergency vehicles can access the school quickly.

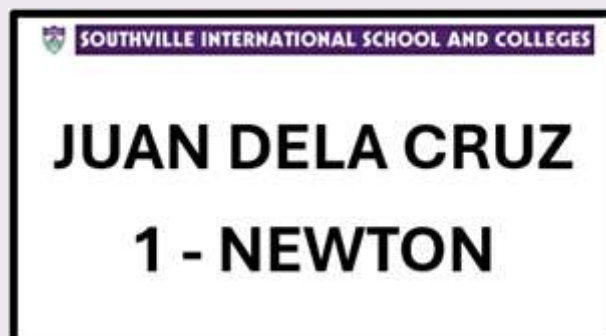
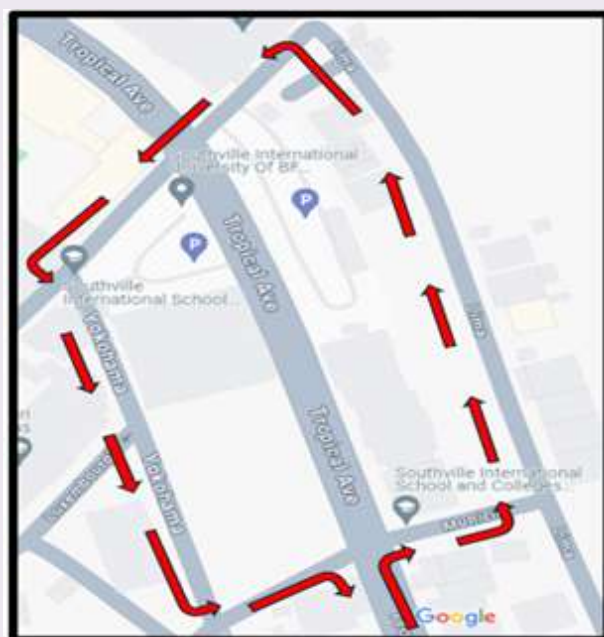


Efficiency in Parking Areas: Courteous behavior in parking areas, like taking turns and not occupying more space than necessary, ensures that more vehicles can be accommodated without congestion



Traffic Guidelines for Luxembourg, Tropical & Munich Campuses

1. Luxembourg, Munich and Lima Parking areas are designated as drop-off, pick-up and waiting zones for drivers. Students are expected to follow this at all times.
2. Luxembourg Street is a tow-away zone. For ease in traffic flow and for the safety of your children, drop them off at Luxembourg Parking.
3. Students are advised to prepare their things beforehand for a swift 10-second drop off during school arrival.
4. Kindly use the furthest stop as much as possible to maximize the drop off area at Luxembourg Parking.
5. A one-way traffic scheme will be implemented from 7:00 am to 5:00 pm, Mondays thru Saturdays.
6. Munich and Luxembourg students can enter and exit at the College gate provided they have a Gate Pass.
7. Placards should be placed on the car's windshield when students are being picked up to facilitate easy and faster identification by the guards doing the paging. Please refer to the image on the right for the sample placard.



Traffic Guidelines for STAR Campus

- 1.No parking along Elizalde St. which is a tow-away zone.
- 2.Vehicles coming from the Concha Cruz area are not allowed to do a U-Turn on Elizalde St. Instead, they should proceed to Aguirre St., make a U-Turn there, then turn right towards STAR Campus.
- 3.U-Turn should be made after Batac St.



Penalties for Violation of Traffic Rules



- 1.BF Homes residents/Guest BF sticker holders may be refused a BF Gate sticker during renewal of application with the BF Federation of Homeowner Associations, Inc. (BFFHAI).
- 2.Clamping of tires by the BFFHAI security will be implemented.
- 3.Students who are dropped off or picked up in non-designated areas will be sanctioned for violating school policies.

Managing traffic flow is everyone's concern. Let's all support and do our part in ensuring our children reach and leave school safely and efficiently.

FETCHER'S PASS AND PERMANENT GATE PASSES

Reminder: Gate and Fetcher's Pass Applications for AY 2025-2026

To ensure a smooth and secure dismissal process, please apply for the required passes before the start of classes:

1. **Fetcher's Pass**

- For parents/guardians or authorized adults who will pick up students.
- A maximum of 3 fetchers per student.
- One pass may cover multiple SISC students under the same fetcher.

Apply Online
(please refer to the guidelines in the form)

2. **Permanent Gate Pass** (Grades 7–12, IB1 & IB2 only)

- A downloadable digital ID shown at dismissal.
- Confirms student's mode of transportation/way of going home.

Apply Online
(please refer to the guidelines in the form)

For VOLT/Flex Students:

These passes are optional. If your child has an approved campus visit from the Deputy Principal, a **Temporary Gate Pass** may be requested. Kindly inform us in advance, via email, of their mode of going home and the name of the authorized fetcher.

You may be contacted to verify the information in your application. For any questions, feel free to reach out.

Thank you for your support and cooperation.

**ERRATUM**

This statement is to correct an error in the previously posted SPB #43 of Academic Year 2024-2025.

John Wendell delos Santos from 7-Resilience should have been included in the list of students who exceeded USA standards in both English and Math for IXL, not English only.

We apologize for any confusion this may have caused.

VALUE OF THE MONTH**AUGUST**

Growing in Mindfulness

**VALUE OF THE WEEK****AUGUST 18 - 22, 2025**

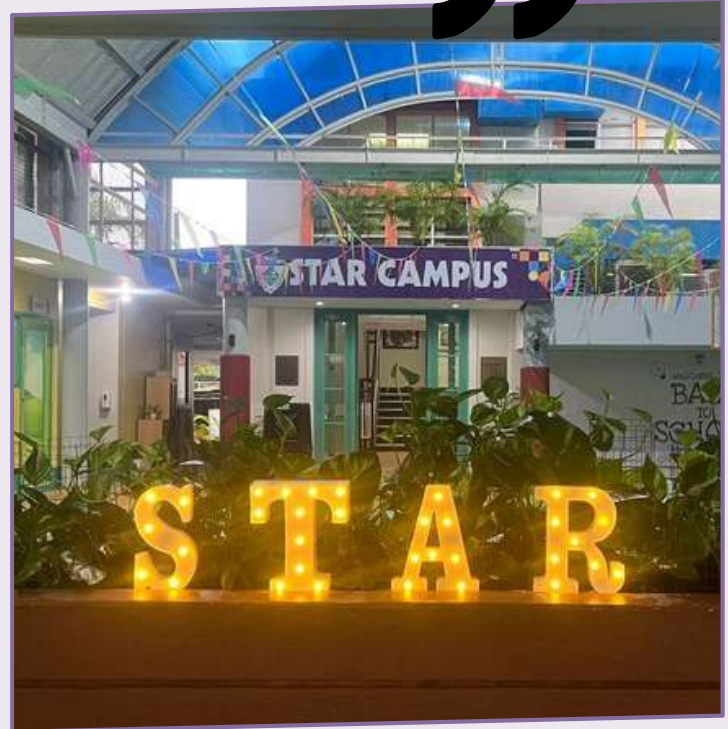
Valuing Opportunities for Growth and Improvement

MONARCHS MOMENT

STAR CAMPUS



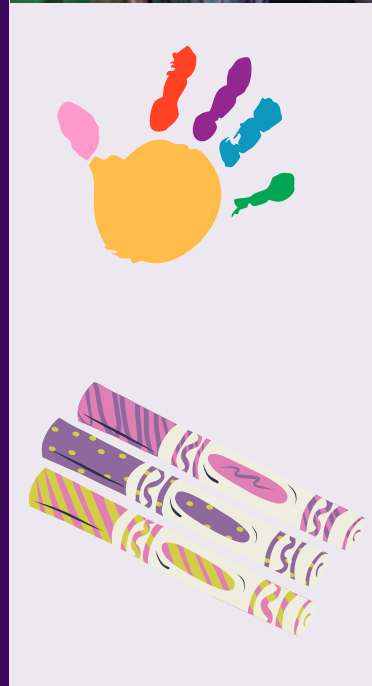
First week, first win! Our STAR Campus Young Monarchs are off to a bright start, full of smiles, energy, and excitement for the year ahead. Here's to more learning and shining together!



MONARCHS MOMENT

MUNICH CAMPUS

Opening of Face-to-Face Classes of ECED



MONARCHS MOMENT

LUXEMBOURG CAMPUS

Teachers in 5Cs Leadership Bootcamp



Research Exploration with our Japanese Educational Partners



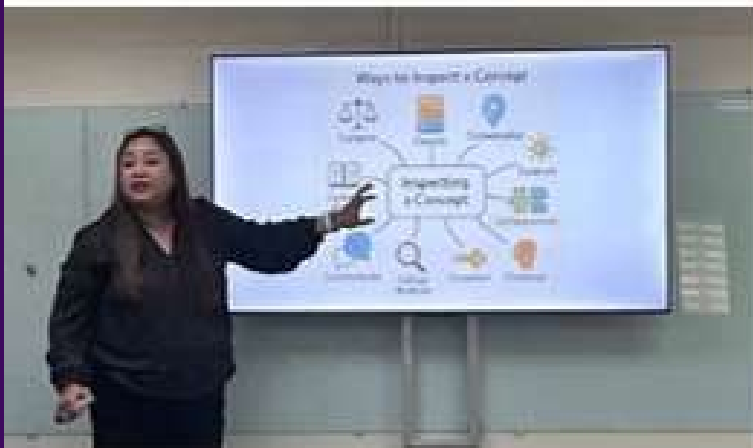
Luxembourg Planning



MONARCHS MOMENT

INTERNATIONAL BACCALAUREATE

Teacher's In-Service Training



SOCIAL-EMOTIONAL LEARNING (SEL) CORNER

ENCOURAGING CHILDREN TO VALUE OPPORTUNITIES

**01**

CULTIVATE A GROWTH MINDSET

Help children understand that success comes from hard work and persistence. When discouraged by setbacks or mistakes, encourage them to analyze what went wrong, how they can improve next time, and learn from their errors.

02 INCORPORATE POSITIVE REINFORCEMENT & MOTIVATION

Help children see the link between their effort and the positive results they achieve. Celebrate small wins to build confidence and motivation.

**03**

CREATE A SUPPORTIVE ENVIRONMENT

Provide opportunities for children to pursue their interests and engage in activities they enjoy. Allow a safe space for them to share their thoughts, feelings, and concerns without judgment.

04 PROMOTE DECISION-MAKING SKILLS

Give children age-appropriate opportunities to make choices and learn from the consequences.



ENCOURAGE INDEPENDENCE

Help children develop self-reliance and problem-solving skills. Coupled with guidance and support when needed, giving children space to do new things and learn from their experiences builds confidence.

05

TEACH THEM TO BE GRITTY

Encourage them to stick with tasks until completion even when they are challenging.

06

HEALTH ADVISORY

Academic Year Health Guide

With the new school year on the horizon, students, parents, and employees can look forward to new beginnings. Stay healthy and prepared with these helpful tips:



Build a consistent sleep routine



Limit screen time



Get Vaccinated

Stay up to date with vaccinations



HEALTHY FOOD

Eat nutritious foods



Stay hydrated and physically active



Maintain proper sitting posture



Balance study, work and leisure



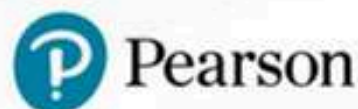
MEDICAL ALERT ALLERGY

Be aware of allergies and triggers

"Nurture Your Health Now, Thrive in the Future!"

SOUTHVILLE
GLOBAL EDUCATION NETWORK

AROUND SGEN



Earn your
**UK DEGREE IN
BUSINESS &
COMPUTING AI**
here in the Philippines

ENQUIRE ABOUT OUR
AFFORDABLE FEES

www.sisfu.edu.ph

Francine Diaz
Business Student

Southville International School Affiliated with Foreign Universities

☎ 0998-963-5282 | 84 | 86     SISFUPH

YOUR VOICE MATTERS:

SHARE YOUR FEEDBACK HERE



Customer Satisfaction Survey

Our Public Relations Office has created a survey tool available to all parents, students, and stakeholders of Southville International School and Colleges. Simply scan the QR code below to share your commendations, concerns, or suggestions.

Kindly scan the QR code.

Please acknowledge that you received the e-bulletin. Acknowledgment of this email won't require you to submit reply slips. Kindly scan the QR code to the right or click the link below:



Acknowledgement Form

Marie Vic F. Suarez, PhD
Principal, K12 and IB

To view the previous SPBs, please click the button below:

K12 and IB Bulletins