

Managed by Southville International School and Colleges



# STUDENTS AND PARENTS' BULLETIN

## SOUTHVILLE MONARCHS INTERNATIONAL SCHOOL

With hearts full of hope and minds eager to share new knowledge, we welcome our amazing students back to Southville Monarchs International School (SMIS)! Thank you for a smooth and joyful opening of classes by doing the small things right, from coming to school on time and ready to learn to wearing the school uniform well and trying your best in class activities. I would like to extend a warm greeting to our new students and their families who are now part of our Monarch family. We are thrilled to have you as part of our vibrant and diverse school community, and it is my goal to get to know each and every one of you.

We are confident that once you have acclimated yourself to your new surroundings and learn the rhythm of the school, you will find SMIS a place where learners thrive academically, socially and emotionally.

To our returning students, I am delighted to welcome you back for another year of growth and accomplishment. We are so proud of the work that you have done last school year, and are pleased that you are continuing your educational journey with us. It's been wonderful seeing all of you return with laughter, with friendships old and new, and a strong sense of purpose to soar to new intellectual and personal heights. We look forward to seeing you improve by leaps and bound as you show up, participate, and embrace the spirit of lifelong learning.



**Marie Vic F. Suarez, PhD**  
**Principal, K12 and IB**

## Vision

Southville Monarchs International School (SMIS) is recognized nationally and globally for providing a solid foundation in academics and values to develop lifelong learners who will live productive and happy lives.



## Mission

Southville Monarchs International School is committed to equip learners with the 5Cs (Competence, Character, Commitment to Achieve, Collaboration, and Creativity/Innovation) through an internationally based academic curricula and universal values programs.

These programs are facilitated by competent, creative and caring teachers within a safe and conducive learning environment.

- 6Qs\* Program (Diligence Quotient + Intelligence Quotient + Reading Quotient +, Emotional Quotient + Computer-Technology Quotient= Success Quotient)
- Harvard Executive Functions (Memory, Cognitive, Flexibility, Impulse Control)
- Artificial Intelligence (AI) and Technology-Driven Programs
- Values Program



We are so proud of the work that you have done last school year, and are pleased that you are continuing your educational journey with us.

The day began with their class orientation and a short program that included a warm welcome message from the school principal, encouraging students to strive for excellence and embrace new challenges.

Teachers introduced themselves to their new classes and led engaging orientation sessions to help students settle into their routines.

## ***SMIS Kicks Off Academic Year with Warm Student Welcome***

Southville Monarchs International School officially opened its doors for the new academic year on August 18 with a warm and informative welcome for all students. The first day was dedicated to orientation activities designed to help students transition smoothly into the school environment.

Students participated in a class orientation, where they met their teachers, learned about their subjects, and were briefed on classroom expectations. This was followed by a campus tour, allowing both new and returning students to reacquaint themselves with the school's facilities.

A school policies orientation was also held to ensure students clearly understood the rules, guidelines, and values that define the Southville community. This session emphasized discipline, respect, academic integrity, and the school's commitment to excellence.

One of the highlights of the day was the opportunity to meet the school authorities and administrative officers. Students were introduced to key members of the school leadership, including the Deputy Principal, Administrative Team, Faculty and the Non-Teaching Employees of Southville Monarchs International School.



### **School Authorities Orientation**



Building a strong foundation of respect and recognition. Our preschool students participated in our School Authorities Orientation, familiarizing themselves with the key leaders of our school community.

# VOLT Ensures Learning Never Stops

In preparation for possible prolonged class suspensions due to inclement weather or high heat index, SMIS held a Virtual Online Learning and Teaching (VOLT) Orientation for grade school students.



# SMIS MANAGEMENT AND FACULTY

Academic Year 2025 - 2026



**Jocelyn Tizon, PhD**  
School President



**Mr. Rex Wallen Tan**  
School Founder



**Marie Vic Suarez, PhD**  
SGEN Principal



**Ms. Rahima Ona**  
Deputy Principal



**Ms. Jamie Ramos**  
Administrative Coordinator



**Ms. Jemalyn Concepcion**  
Administrative Associate



**Ms. Catherine Beltran**  
Nursery and Pre -Kinder Adviser



**Ms. Jeevee Depositario**  
Junior Kinder Adviser



**Ms. Joyce Manantan**  
Senior Kinder Adviser

**Ms. Shaina Anne Musa**  
Grades 1 and 2 Adviser



**Ms. Cherry Lacson**  
Grades 3 and 4 Adviser

# SMIS STAFF

Academic Year 2025 - 2026



**Mr. Ricky Relado**  
School Guard



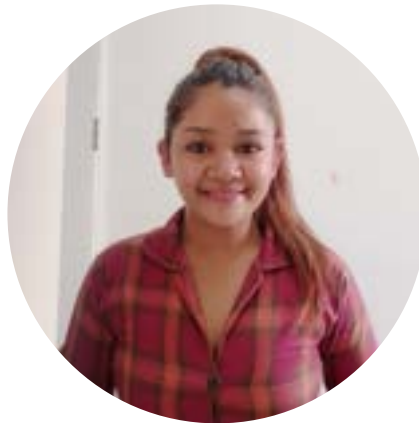
**Mr. Rhonel Murillo**  
School Guard



**Kuya Suave Tanaleon**  
Housekeeping Personnel



**Ms. Alelie Mantances**  
Teacher Assistant



**Ate Jile Medez**  
Teacher Aide



**Ate Jera Mae Medez**  
Teacher Aide

## CLASS SUSPENSION ANNOUNCEMENT

SMIS follows the official suspension of classes declared by the Local Government Unit. In the event of such declarations, all face-to-face classes are automatically cancelled. The school will decide whether to shift to online synchronous (VOLT) or asynchronous learning. Please wait for the announcements.

Students are advised to make productive use of the day by working on their assigned IXL tasks in Math, English, and Science. Stay safe and stay updated through our official communication channels.





# CLASS SUSPENSION ANNOUNCEMENT

In the event that the Local Government announces a late-day suspension of classes, it's important to note that all classes, both those conducted in person and held online, will conclude on this staggered basis:

LEVEL	TIME
Preschool to Grade 2	11:00 AM
Grades 3 to 4	12:00 NN

Students with siblings will join the dismissal of the youngest sibling. This coordinated dismissal time serves two purposes: firstly, it prioritizes the safety and convenience of our students, and secondly, it contributes to the reduction of traffic congestion in the area.

We believe that this flexibility will provide a safer alternative for students and parents during adverse weather condition. Here are some key points to note:

**Safety First:** Your child's safety is our utmost priority. We want to ensure that they can continue their education without putting themselves at risk during challenging weather condition.

**Online Attendance:** Students attending classes online will be marked as present, just as if they were physically present at school. This ensures that their perfect attendance record remains intact.

## ACCESS TO THE STUDENT HANDBOOK AND ACKNOWLEDGMENT FORM

We would like to inform you that the Student Handbook is now accessible online. You may view or download it through the following link:

[\*\*Student Handbook\*\*](#)

We strongly encourage all parents and students to read and understand the contents of the Student Handbook to help ensure a safe, respectful, and positive learning experience for everyone. Once you have reviewed the handbook, please confirm your receipt and understanding by completing the Acknowledgment Form:

[\*\*Acknowledgement Form\*\*](#)

# BACK TO SCHOOL ROAD COURTESY AND SAFETY REMINDERS

Road courtesy within the vicinity of SMIS fosters a safer, more organized, and more pleasant environment for everyone.

## Safety of Stakeholders:

In SMIS, we have a number of students and staff who commute to and from school. Courteous behavior in parking areas, like taking turns and not occupying more space than necessary, ensures that more vehicles can be accommodated without congestion.

## Efficient Traffic Movement:

Courteous behavior, like allowing other drivers to merge, avoiding blocking intersections and adhering to NO DROP OFF/PICK UP ZONES, helps maintain a steady flow of traffic. This is especially important during peak hours like arrival and dismissal times.

## Reduced Stress and Conflicts:

Politeness on the road can minimize road rage and conflicts among drivers, creating a more peaceful and orderly environment.

## Positive Role Modeling:

Adults who exhibit road courtesy set a good example for children, teaching them the importance of following traffic rules and being considerate to others.

## Emergency Access:

In case of an emergency, courteous driving ensures that roads are not blocked and emergency vehicles can access the school quickly.

## Efficiency in Parking Areas:

Courteous behavior in parking areas, like taking turns and not occupying more space than necessary, ensures that more vehicles can be accommodated without congestion.



# TRAFFIC GUIDELINES FOR SMIS CAMPUS

Road courtesy within the vicinity of SISC fosters a safer, more organized, and more pleasant environment for everyone. Observing road courtesy is essential in a school environment to ease traffic flow and ensure:

- SMIS Parking areas are designated as drop-off, pick-up and waiting zones for drivers. Students are expected to follow this at all times.
- Students are advised to prepare their things beforehand for a swift 10-second drop off during school arrival.



***Managing traffic flow is everyone's concern. Let's all support and do our part in ensuring our children reach and leave school safely and efficiently.***

## SOCIAL AND EMOTIONAL Learning

At Southville Monarchs International School, we believe in helping students grow not only academically but also socially and emotionally. **Social and Emotional Learning (SEL)** helps students develop essential life skills like managing emotions, building positive relationships, and making responsible decisions.

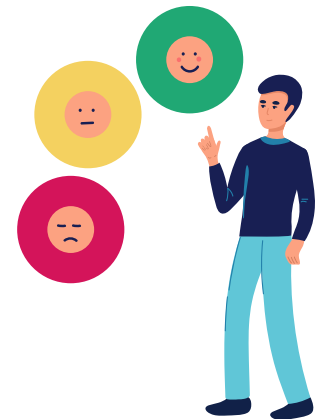
This month, our SEL focus is on Self-Awareness. Students are learning to recognize their emotions, reflect on their strengths, and understand how their thoughts and feelings influence their actions.

### **Try it at home:**

Ask your child, "What made you feel proud today?" or "How did you handle a tough moment today?"

These simple questions encourage emotional awareness and help build stronger connections.

When children feel understood and supported emotionally, they're more ready to learn, connect, and thrive.



Please acknowledge that you received the e-bulletin. Acknowledgment of this email won't require you to submit reply slips. Kindly click the link below:

**[Acknowledgment Form](#)**

**RAHIMA P. ONA**  
**Deputy Principal**